

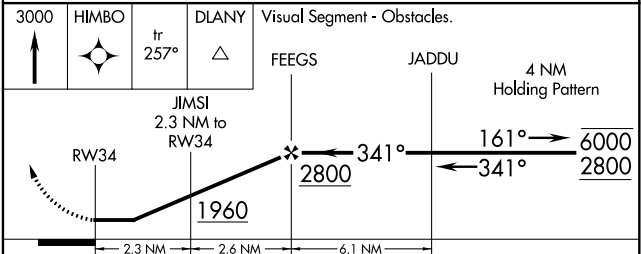
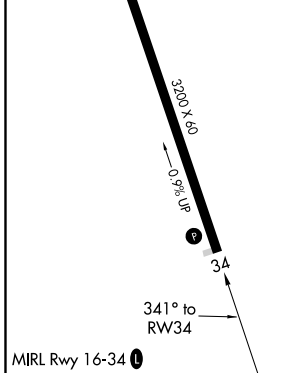
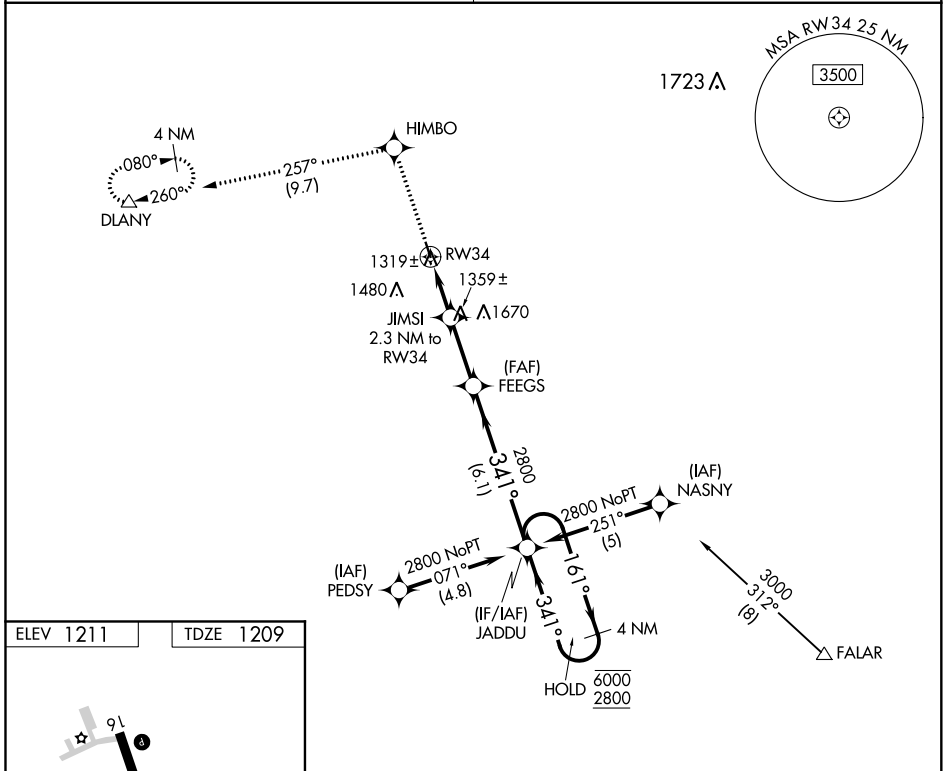
APP CRS	Rwy Idg	<b>3200</b>
<b>341°</b>	TDZE	<b>1209</b>
	Apt Elev	<b>1211</b>

# RNAV (GPS) RWY 34

RUSHFORD MUNI-ROBERT W BUNKE FLD (55Y)

RNP APCH.	MISSED APPROACH: Climb to 3000 direct HIMBO and track 257° to DLANY and hold.
▼ NA	Rwy 34 helicopter visibility reduction below 1 SM NA. Use Preston altimeter setting, when not received, use Winona altimeter setting and increase all MDAs 80 feet and Cat C visibility ¼ SM.

ROCHESTER APP CON ★ <b>119.8 251.125</b>	CTAF <b>122.9</b>
---	----------------------



CATEGORY	A	B	C	D
LNAV MDA	1620-1	411 (500-1)	1620-1¼ 411 (500-1¼)	NA
CIRCLING	1720-1 509 (600-1)	1880-1 669 (700-1)	2080-2½ 869 (900-2½)	NA

NC-1, 02 DEC 2021 to 30 DEC 2021

NC-1, 02 DEC 2021 to 30 DEC 2021