

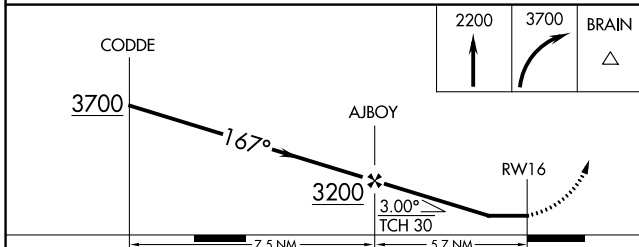
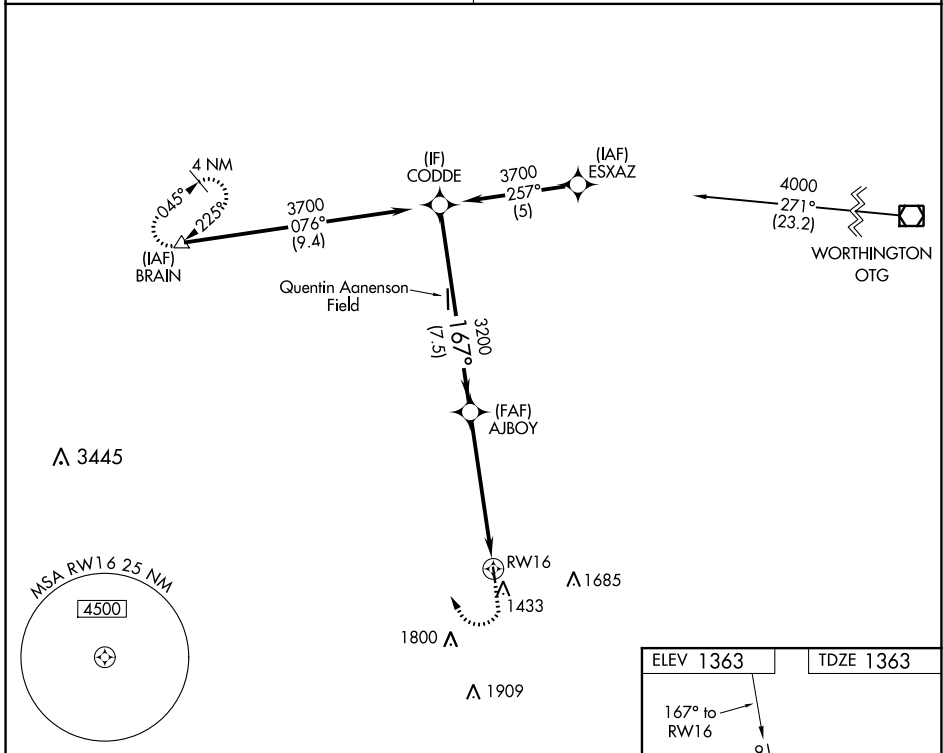
WAAS CH <b>82742</b> <b>W16A</b>	APP CRS <b>167°</b>	Rwy Idg TDZE Apt Elev	<b>2797</b> <b>1363</b> <b>1363</b>
--	------------------------	-----------------------------	---

# RNAV (GPS) RWY 16

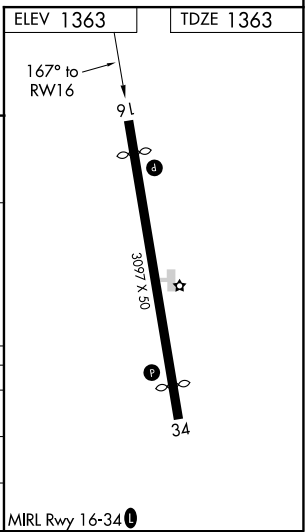
ROCK RAPIDS MUNI (R.R.Q)

RNP APCH. ▼ ▲ NA	Procedure NA at night. Rwy 16 helicopter visibility reduction below 1 SM NA. Use Sioux Falls, SD altimeter setting.	MISSED APPROACH: Climb to 2200 then climbing right turn to 3700 direct BRAIN and hold.
------------------------	---	--

SIOUX FALLS APP CON* <b>126.9 284.725</b>	UNICOM <b>122.8 (CTAF) 0</b>
--	---------------------------------



CATEGORY	A	B	C	D
LP MDA	1960-1	597 (600-1)		NA
LNAV MDA	1980-1	617 (700-1)		NA
CIRCLING	1980-1 617 (700-1)	2040-1 677 (700-1)		NA



NC-3, 02 DEC 2021 to 30 DEC 2021

NC-3, 02 DEC 2021 to 30 DEC 2021