

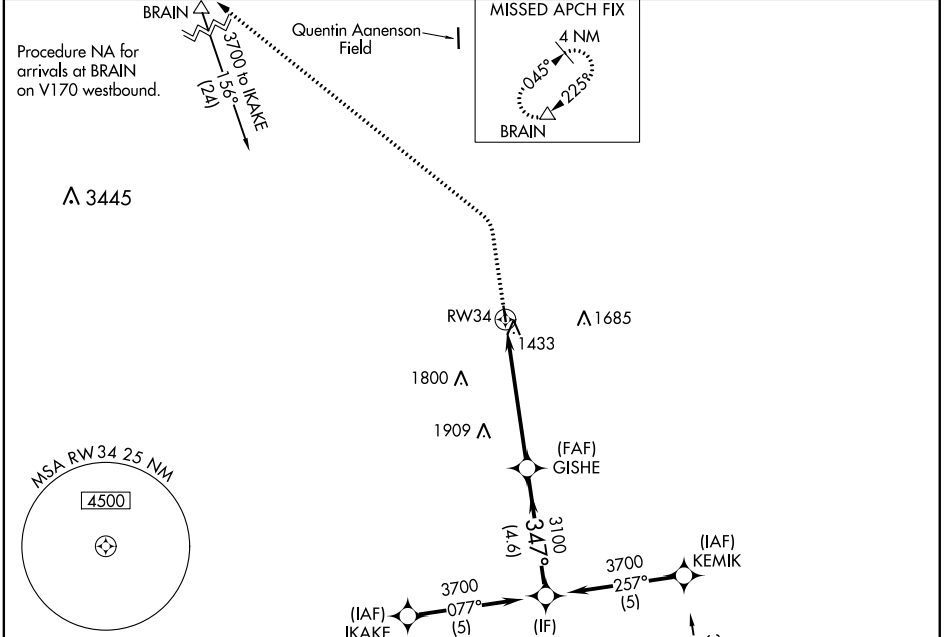
WAAS CH <b>40044</b> <b>W34A</b>	APP CRS <b>347°</b>	Rwy Idg TDZE Apt Elev	<b>2797</b> <b>1363</b> <b>1363</b>
--	------------------------	-----------------------------	---

# RNAV (GPS) RWY 34

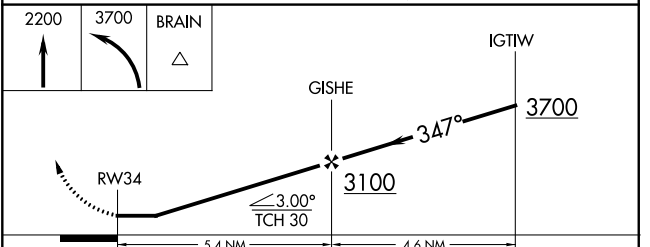
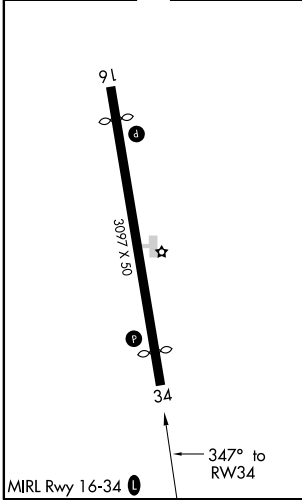
ROCK RAPIDS MUNI (R.R.Q)

RNP APCH. ▼ ▲ NA Procedure NA at night. Rwy 34 helicopter visibility reduction below 1 SM NA. Use Sioux Falls, SD altimeter setting.	MISSED APPROACH: Climb to 2200 then climbing left turn to 3700 direct BRAIN and hold.
--	---

SIOUX FALLS APP CON * <b>126.9 284.725</b>	UNICOM <b>122.8 (CTAF)</b>
---	-------------------------------



ELEV 1363	TDZE 1363
-----------	-----------



CATEGORY	A	B	C	D
LP MDA	1960-1	597 (600-1)		NA
LNAV MDA	1960-1	597 (600-1)		NA
<b>C</b> CIRCLING	1960-1	2040-1		NA
	597 (600-1)	677 (700-1)		

NC-3, 02 DEC 2021 to 30 DEC 2021

NC-3, 02 DEC 2021 to 30 DEC 2021