

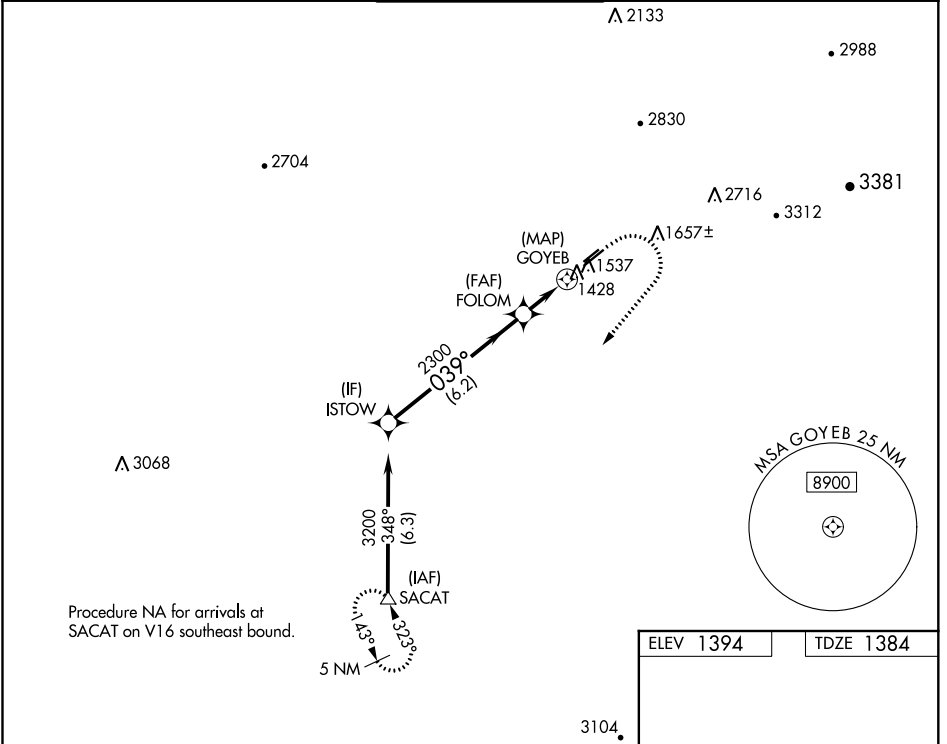
WAAS CH 90525 W04B	APP CRS 039°	Rwy Idg TDZE Apt Elev	5100 1384 1394
--	------------------------	-----------------------------	---

RNAV (GPS) RWY 4R

FALCON FLD (F'F'Z)

RNP APCH.	<p>▼ Circling to Rwy 22L, 22R NA at night. Circling NA for Cat C southeast of Rwy 4R and 22L.</p> <p>▲ MISSED APPROACH: Climb to 1900 then climbing right turn to 5000 direct SACAT and hold, continue climb-in-hold to 5000.</p>
-----------	---

ATIS 118.25	PHOENIX APP CON 120.7 239.0	FALCON TOWER * 124.6 (CTAF) 0	GND CON 121.3	UNICOM 122.95
-----------------------	---------------------------------------	---	-------------------------	-------------------------

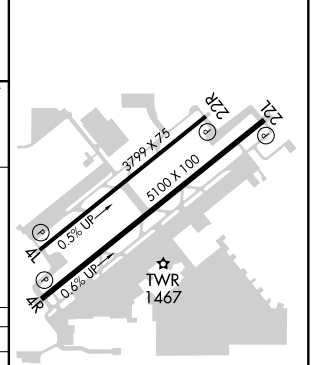
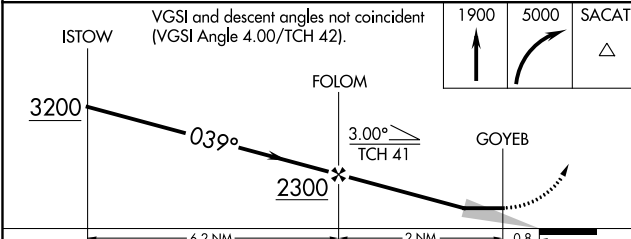


SW-4, 02 DEC 2021 to 30 DEC 2021

SW-4, 02 DEC 2021 to 30 DEC 2021

Procedure NA for arrivals at SACAT on V16 southeast bound.

ELEV 1394	TDZE 1384
-----------	-----------



CATEGORY	A	B	C	D
LP MDA	1680-1 296 (300-1)			NA
LNAV MDA	1800-1	416 (500-1)	1800-1 1/8 416 (500-1 1/8)	NA
CIRCLING	1860-1 466 (500-1)	1980-1 586 (600-1)	2040-1 3/4 646 (700-1 3/4)	NA

REIL Rwy 4R, 4L, 22L and 22R
MIRL Rwy 4R-22L 0
MIRL Rwy 4L-22R