

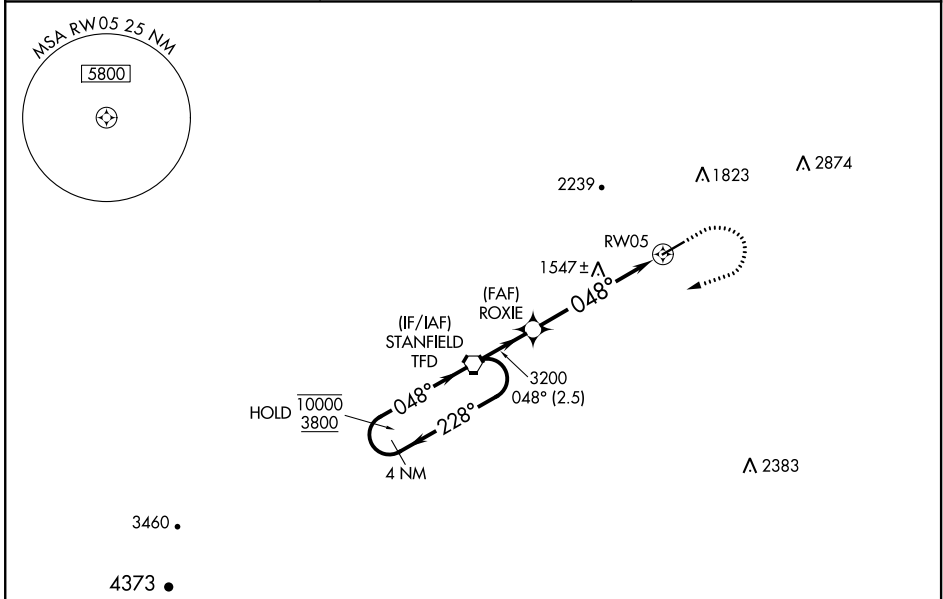
WAAS CH 61042 W05A	APP CRS 048°	Rwy Idg TDZE Apt Elev	5200 1458 1464
----------------------------------------	------------------------	-----------------------------	-------------------------------------------

RNAV (GPS) RWY 5

CASA GRANDE MUNI (CGZ)

RNP APCH.	MALSR	MISSED APPROACH: (Do not exceed 240K until TFD VORTAC) Climb to 2000 then climbing right turn to 5900 direct TFD VORTAC and hold. Continue climb in hold to 5900.
<p>▽ For uncompensated Baro-VNAV systems, LNAV/VNAV NA below -17°C or above 54°C. Circling NA for Cat C and D northwest of Rwy 5-23. For inoperative ALS, increase LNAV Cat C/D visibility to 1 SM.</p>		

AWOS-3PT 132.175	ALBUQUERQUE CENTER 125.4 269.3	UNICOM 122.7 (CTAF) 0
----------------------------	------------------------------------------	---------------------------------



SW-4, 02 DEC 2021 to 30 DEC 2021

SW-4, 02 DEC 2021 to 30 DEC 2021

ELEV 1464		TDZE 1458	
<p>4 NM Holding Pattern</p> <p>TFD VORTAC</p> <p>10000 ← 228°</p> <p>3800 → 048°</p> <p>GP 3.00°</p> <p>TCH 40</p>		<p>2000 5900 TFD</p> <p>↑ ↘ ⬡</p> <p>*LNAV only</p> <p>*1 NM to RW05</p> <p>RW05</p>	
<p>3200</p> <p>ROXIE</p> <p>3200</p> <p>2.5 NM</p> <p>4.4 NM</p> <p>1 NM</p>		<p>1479 Δ</p> <p>5200 x 100</p> <p>1511 ☆</p> <p>1458 ±</p> <p>Δ 0.3% UP</p> <p>048° to RW05</p>	
CATEGORY	A	B	D
LPV DA		1708-½	250 (300-½)
LNAV/VNAV DA		1708-½	250 (300-½)
LNAV MDA	1800-½	342 (400-½)	1800-⅝ 342 (400-⅝)
C CIRCLING	1960-1	496 (500-1)	1960-1½ 2260-2½ 496 (500-1½) 796 (800-2½)

MIRL Rwy 5-23