

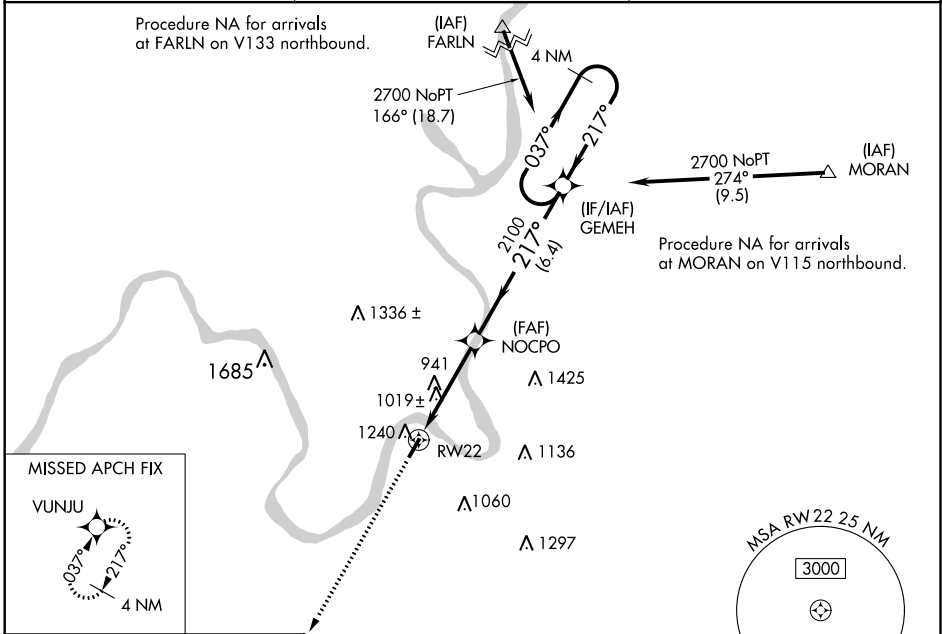
WAAS CH 61323 W22A	APP CRS 217°	Rwy Idg TDZE 758 Apt Elev 758	4000 758 758
--	------------------------	---	---

RNAV (GPS) RWY 22

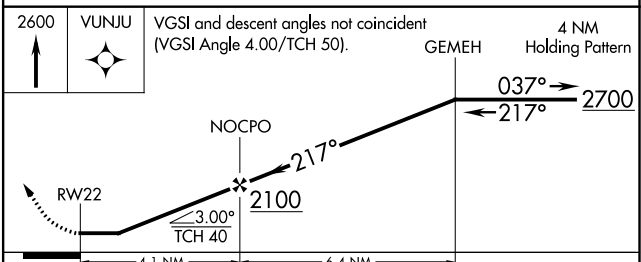
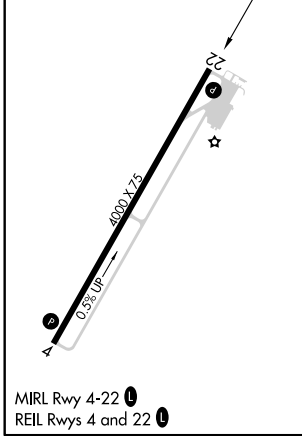
JACKSON COUNTY (I18)

RNP APCH.	When local altimeter setting not received, use Point Pleasant altimeter setting and increase all MDA 60 feet; increase LP and LNAV Cat C visibility ¼ mile. Circling Rwy 4 NA at night. Rwy 22 helicopter visibility reduction below ¾ SM NA.	MISSED APPROACH: Climb to 2600 direct VUNJU and hold.
-----------	---	--

AWOS-2 121.3	HUNTINGTON APP CON 128.4 270.1	UNICOM 122.8 (CTAF) 0
------------------------	--	---------------------------------



ELEV 758	TDZE 758
----------	----------



CATEGORY	A	B	C	D
LP MDA	1280-1	522 (600-1)	1280-1½ 522 (600-1½)	NA
LNAV MDA	1540-1 782 (800-1)	1540-1¼ 782 (800-1¼)	1540-2½ 782 (800-2½)	NA
CIRCLING	1600-1¼	842 (900-1¼)	1600-2½ 842 (900-2½)	NA

NE-4, 02 DEC 2021 to 30 DEC 2021

NE-4, 02 DEC 2021 to 30 DEC 2021