

VOR/DME LRP 117.3 Chan 120	APP CRS 272°	Rwy Idg 3250 TDZE 458 Apt Elev 458
--	------------------------	---

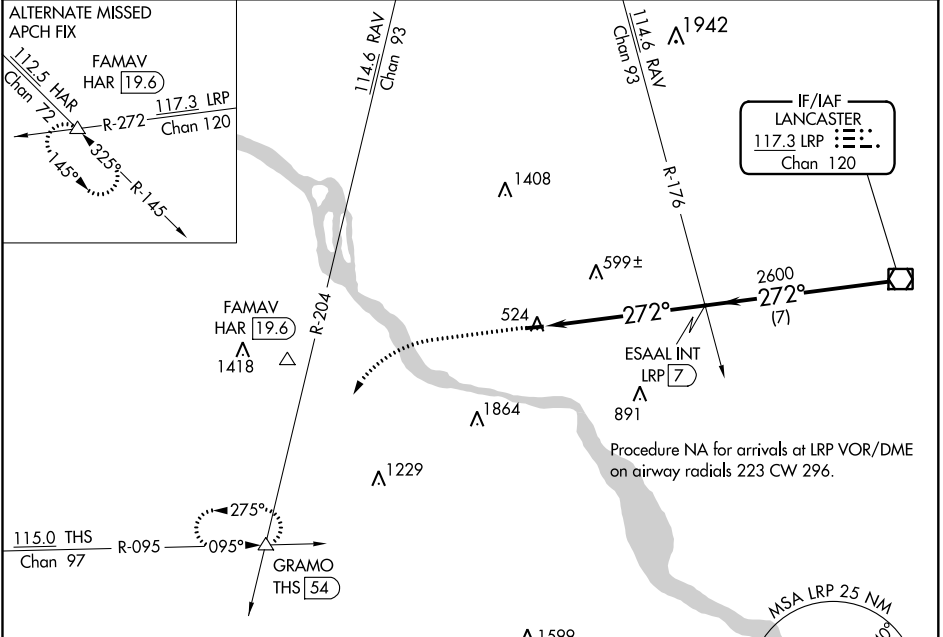
VOR RWY 28

DONEGAL SPRINGS AIRPARK (N71)

▼ Use Harrisburg Intl altimeter setting; when not received, use Fort Indiantown Gap altimeter setting and increase all MDAs 20 feet.
▲ NA

MISSED APPROACH: Climb to 2600 then climbing left turn to 3000 via RAV VORTAC R-204 to GRAMO Int and hold.

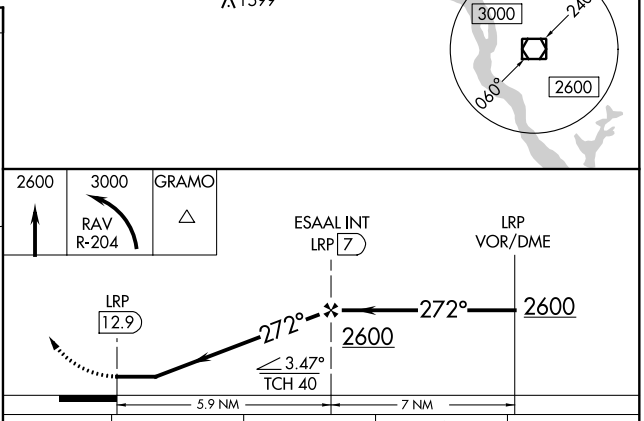
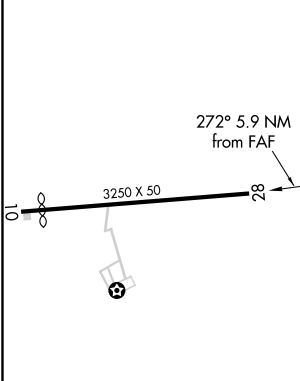
HARRISBURG APP CON 126.45 281.525	HARRISBURG CLNC DEL 127.05	UNICOM 122.8 (CTAF) 0
---	--------------------------------------	---------------------------------



NE-4, 02 DEC 2021 to 30 DEC 2021

NE-4, 02 DEC 2021 to 30 DEC 2021

ELEV 458	TDZE 458
----------	----------



MIRL Rwy 10-28 0	2600	3000	GRAMO	ESAAAL INT LRP 7	LRP VOR/DME
FAF to MAP 5.9 NM	↑	RAV R-204	△	2600	2600
Knots	60	90	120	150	180
Min:Sec	5:54	3:56	2:57	2:22	1:58
CATEGORY	A	B	C	D	
S-28	1120 - 1	662 (700-1)			NA
CIRCLING	1120 - 1	662 (700-1)			NA