

APP CRS	Rwy Idg	<b>4864</b>
<b>172°</b>	TDZE	<b>1364</b>
	Apt Elev	<b>1364</b>

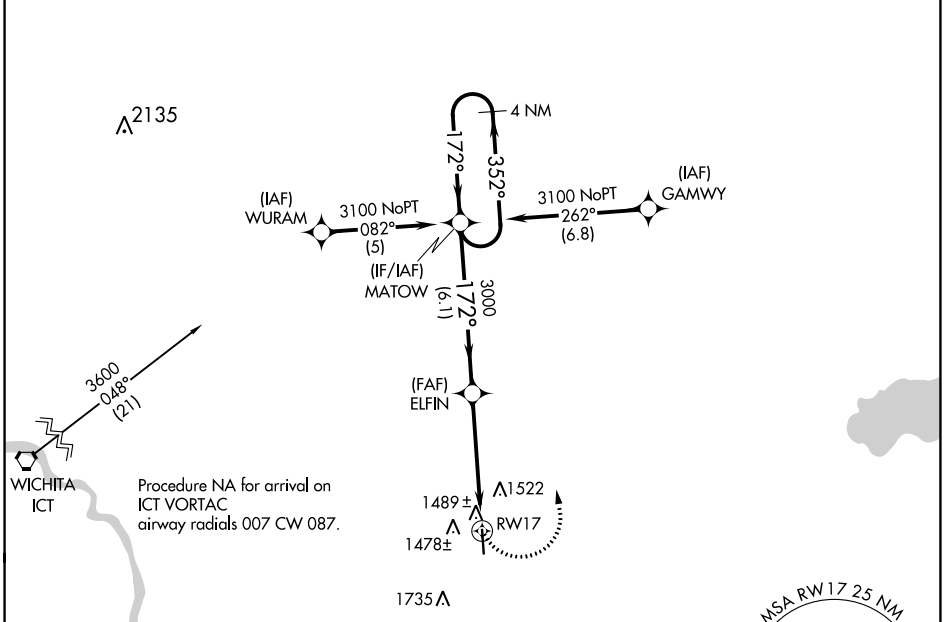
# RNAV (GPS) RWY 17

LLOYD STEARMAN FLD (1K1)

**⚠** DME/DME RNP-0.3 NA. When local altimeter setting not received, use Wichita Dwight D Eisenhower Nil altimeter setting. Straight-in Rwy 17 NA at night, Circling Rwy 17 NA at night. Rwy 17 helicopter visibility reduction below 1 SM NA.

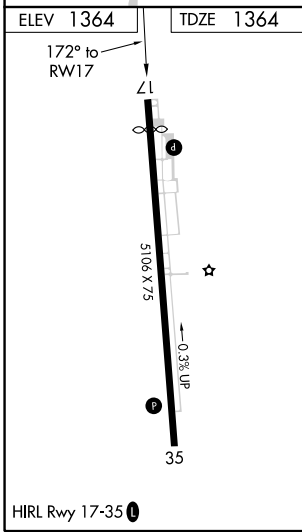
**⚠ NA** MISSED APPROACH: Climbing left turn to 3100 direct MATOW and hold.

AWOS-3 <b>118.3</b>	WICHITA APP CON <b>134.8 269.1</b>	CLNC DEL <b>125.0</b>	UNICOM <b>123.075 (CTAF) 0</b>
------------------------	---------------------------------------	--------------------------	-----------------------------------



NC-2, 02 DEC 2021 to 30 DEC 2021

NC-2, 02 DEC 2021 to 30 DEC 2021



4 NM Holding Pattern		VGSI and descent angles not coincident (VGSI Angle 3.00/TCH 33).		3100 MATOW
3100 ← 352°		172° →		ELFIN
		172°		3.04° TCH 35
		3000		RWY 17
		6.1 NM		5 NM
CATEGORY	A	B	C	D
LNAV MDA	1820-1	456 (500-1)	1820-1 3/8 456 (500-1 3/8)	NA
CIRCLING	1920-1	556 (600-1)	1920-1 1/2 556 (600-1 1/2)	NA