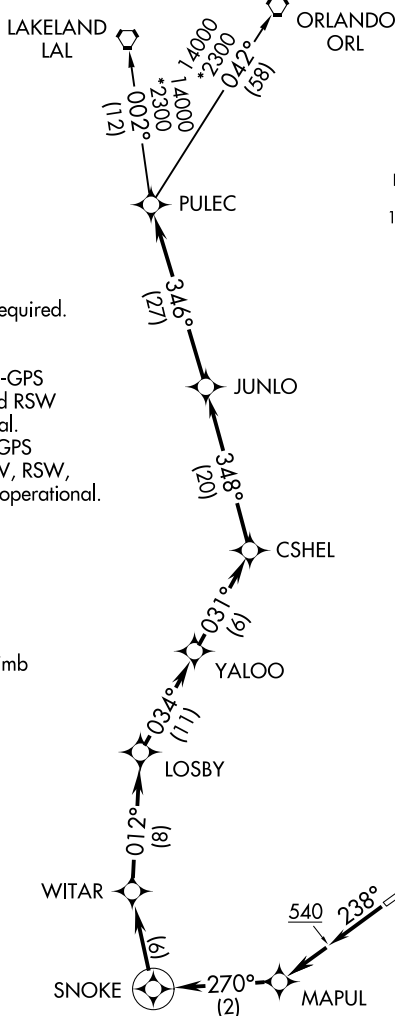


CSHEL SIX DEPARTURE (RNAV)

**TOP ALTITUDE:
4000**



D-ATIS 124.65
 CLNC DEL 132.075
 CPDLC
 GND CON 121.9 257.8
 FORT MEYERS TOWER ★ 128.75 (CTAF) 257.8
 FORT MEYERS DEP CON ★ 126.8 306.2 (Rwy 6)
 134.425 306.2 (Rwy 24)
 MIAMI CENTER 134.75 322.5
 UNICOM 122.95

- NOTE: RADAR required.
- NOTE: DME/DME/IRU or GPS required.
- NOTE: RNAV 1.
- NOTE: For turbojet aircraft only.
- NOTE: Takeoff Rwy 24 - For non-GPS equipped aircraft LBV and RSW DME's must be operational.
- NOTE: Takeoff Rwy 6 - For non-GPS equipped aircraft LAL, LBV, RSW, and SRQ DME's must be operational.

TAKEOFF MINIMUMS

Rwys 6, 24: Standard with a climb of 500' per NM to 540.

NOTE: Chart not to scale.

DEPARTURE ROUTE DESCRIPTION

TAKEOFF RUNWAY 6: Climb heading 058° to 540, then on heading 058° or assigned by ATC, for vectors to CSHEL, then on depicted route to PULEC, thence. . . .

TAKEOFF RUNWAY 24: Climb heading 238° to 540, then direct MAPUL, then climb on track 270° to SNOKE, then right turn direct WITAR, then on depicted route to PULEC, thence. . . .

. . . on (transition). Maintain 4000, or as assigned by ATC, expect filed altitude/flight level 10 minutes after departure.

LAKELAND TRANSITION (CSHEL6.LAL)
 ORLANDO TRANSITION (CSHEL6.ORL)

CSHEL SIX DEPARTURE (RNAV)

SE-3, 02 DEC 2021 to 30 DEC 2021

SE-3, 02 DEC 2021 to 30 DEC 2021