

# SCUBY SEVEN DEPARTURE

FORT MYERS, FLORIDA

**TOP ALTITUDE:  
3000**

ST. PETERSBURG  
116.4 PIE   
Chan 111  
N27°54.47'-W82°41.06'  
L-21-24, H-8

ORLANDO  
112.2 ORL   
Chan 59  
N28°32.56'-W81°20.10'  
L-21-23-24, H-8

LAKELAND  
116.0 LAL   
Chan 107  
N27°59.17'-W82°00.83'  
L-21-24, H-8

SARASOTA  
117.0 SRQ   
Chan 117  
N27°24.42'-W82°33.82'  
L-21-23, H-8

LA BELLE  
110.4 LBV   
Chan 41  
N26°49.69'-W81°23.49'  
L-21-23, H-8

PAHOKEE  
115.4 PHK   
Chan 101  
N26°46.96'-W80°41.49'  
L-23, H-8

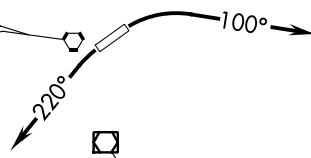
LEE COUNTY  
111.8 RSW   
Chan 55  
N26°31.79'-W81°46.55'  
L-21-23, H-8

CYPRESS  
108.6 CYW   
Chan 23  
N26°09.21'-W81°46.69'  
L-21-23, H-8

KEY WEST  
113.5 EYW   
Chan 82  
N24°35.15'-W81°48.03'  
L-21-23, H-8

TAKEOFF MINIMUMS  
Rwy 6, 24: Standard.

- D-ATIS 124.65
- CLNC DEL 132.075
- CPDLC
- GND CON 121.9 257.8
- ★ FORT MYERS TOWER 128.75 (CTAF) 257.8
- ★ FORT MYERS DEP CON 124.125 371.85
- MIAMI CENTER 134.75 322.5



SE-3, 02 DEC 2021 to 30 DEC 2021

SE-3, 02 DEC 2021 to 30 DEC 2021

NOTE: Chart not to scale.

## DEPARTURE ROUTE DESCRIPTION

TAKEOFF RUNWAY 6: Climbing right turn heading 100° or as assigned for vectors to join filed route, thence . . . .

TAKEOFF RUNWAY 24: Climbing left turn heading 220° or as assigned for vectors to join filed route, thence . . . .

. . . . all aircraft maintain 3000 or assigned altitude. Expect further clearance to filed altitude within 10 minutes after departure.