

APP CRS **177°**  
 Rwy Idg **3995**  
 TDZE **1209**  
 Apt Elev **1209**

# RNAV (GPS) RWY 17

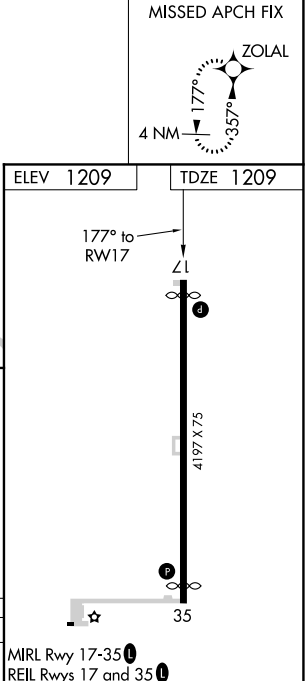
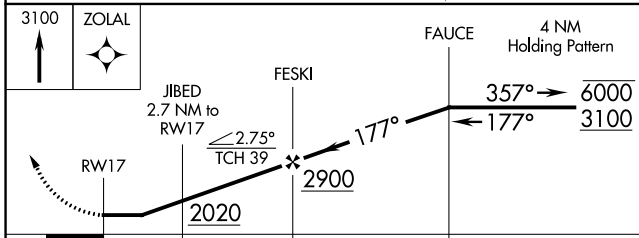
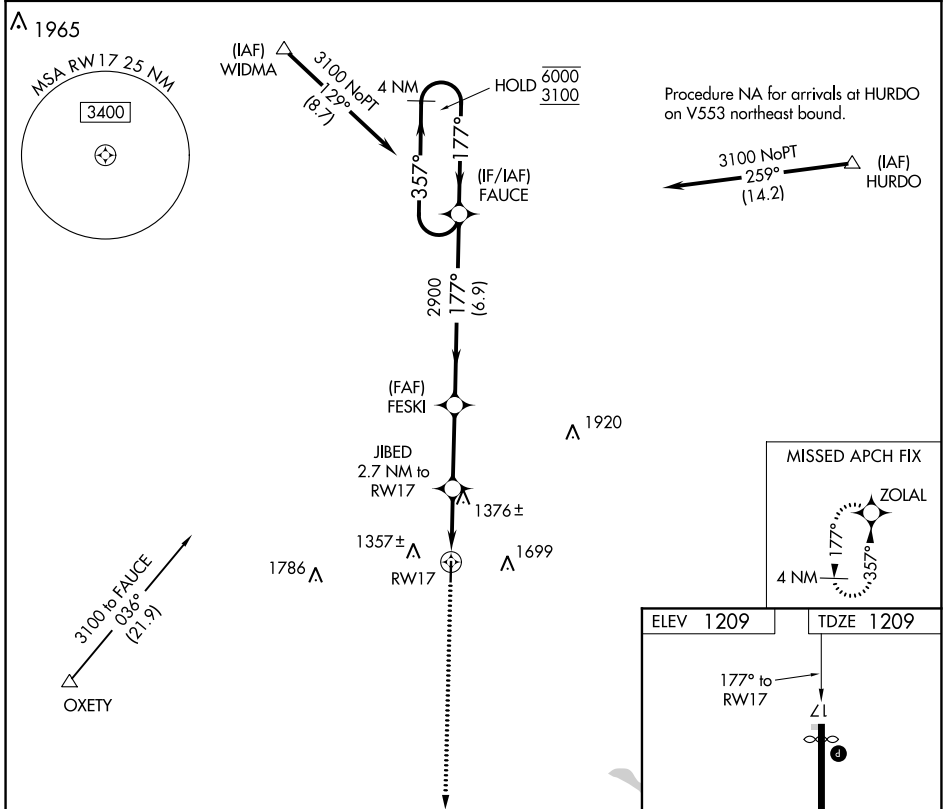
CLAY CENTER MUNI (CYW)

RNP APCH.

**▼** Procedure NA at night. Rwy 17 helicopter visibility reduction below 1 SM NA.  
**▲** NA When local altimeter setting not received, use Salina altimeter setting and increase all MDA 120 feet and LNAV Cat C visibility 3/8 SM.

MISSED APPROACH: Climb to 3100 direct ZOLAL and hold.

AWOS-3T <b>119.95</b>	MARSHALL AAF APP CON * <b>121.25 254.35</b>	UNICOM <b>122.8 (CTAF) 0</b>
--------------------------	--	---------------------------------



CATEGORY	A	B	C	D
LNAV MDA	1640-1	431 (500-1)	1640-1 1/4 431 (500-1 1/4)	NA

MIRL Rwy 17-35 0  
 REIL Rwy 17 and 35 0

NC-2, 02 DEC 2021 to 30 DEC 2021

NC-2, 02 DEC 2021 to 30 DEC 2021