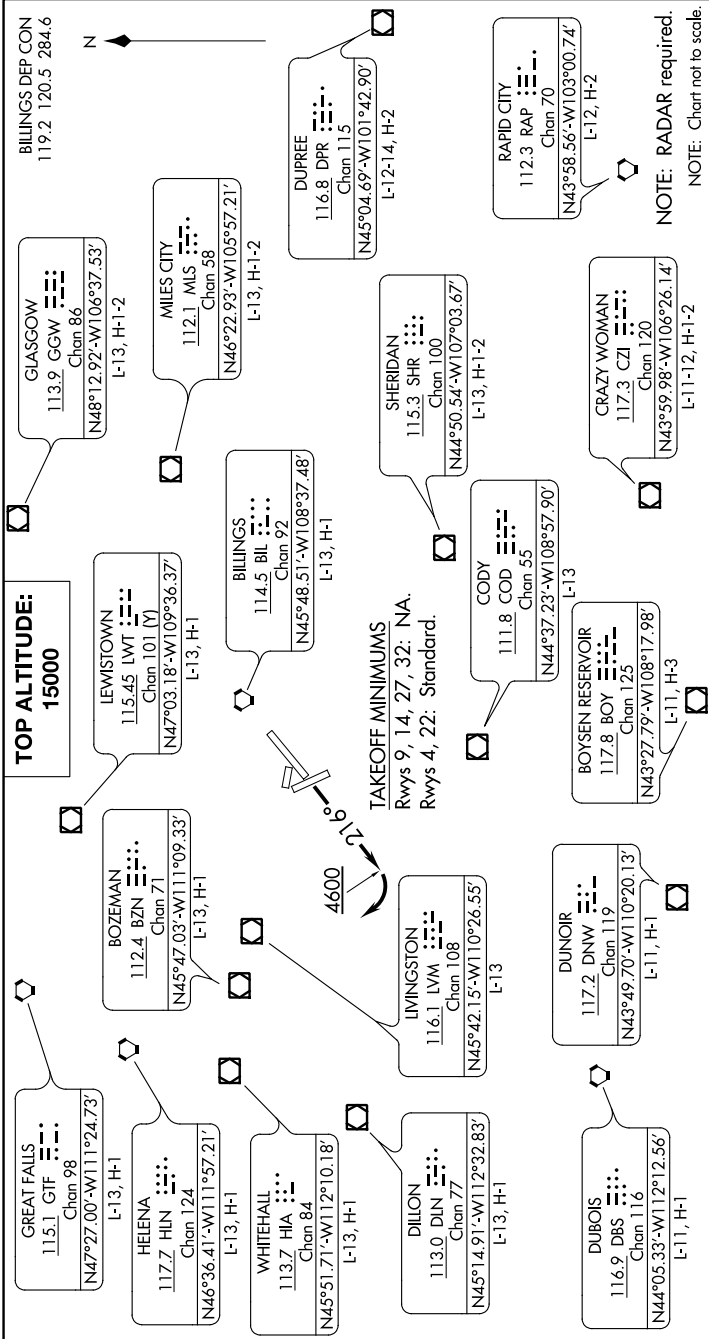


BILLINGS FIVE DEPARTURE

AL-6781 (FAA)

LAUREL MUNI (6S8)
LAUREL, MONTANA

NW-1, '1, '02 DEC 2021 to 30 DEC 2021



BILLINGS FIVE DEPARTURE

DEPARTURE ROUTE DESCRIPTION

TAKEOFF RUNWAY 4: Climb on assigned heading for vectors to assigned fix/route, thence. . . .

TAKEOFF RUNWAY 22: Climb heading 216° to 4600 before turning right, then on assigned heading for vectors to assigned fix/route, thence. . . .

. . . . maintain 15000 or assigned lower altitude. Expect clearance to filed altitude/flight level five minutes after departure.

LOST COMMUNICATIONS: If no transmissions are received for 1 minute after departure, fly last assigned heading until reaching 7000. Proceed direct **BIL VORTAC**, then on last routing cleared and climb to filed altitude.

LAUREL, MONTANA
LAUREL MUNI (6S8)

NW-1, '02 DEC 2021 to 30 DEC 2021