

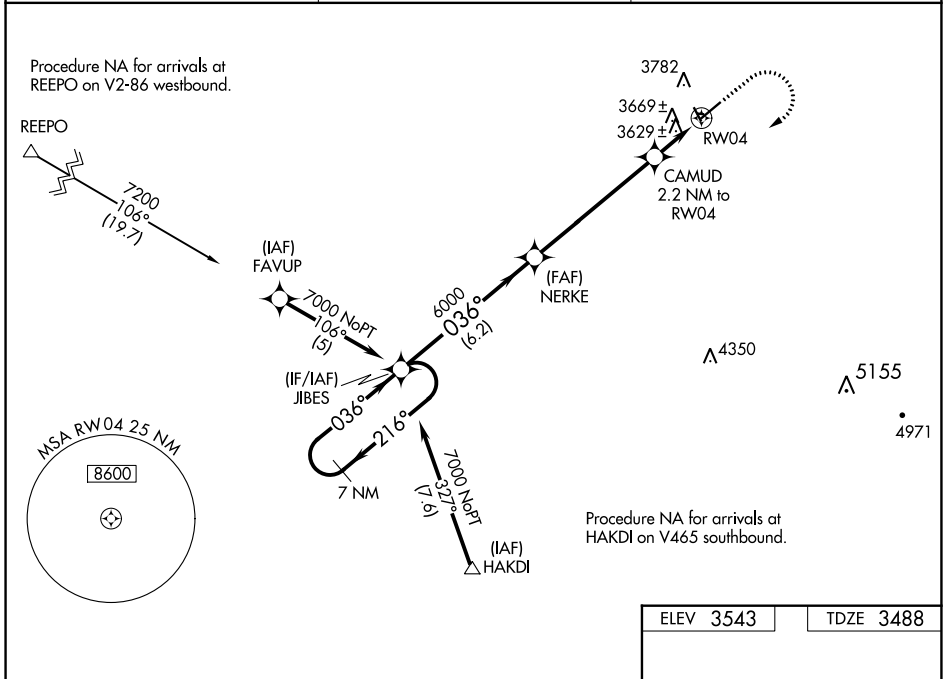
WAAS CH 70422 W04A	APP CRS 036°	Rwy Idg 5199 TDZE 3488 Apt Elev 3543
---------------------------------	------------------------	---

RNAV (GPS) RWY 4

LAUREL MUNI (6S8)

RNP APCH.	MISSED APPROACH: Climb to 4300 then climbing right turn to 7000 direct JIBES and hold.
<p>▼ For uncompensated Baro-VNAV systems, LNAV/VNAV NA below -21°C or above 54°C. When local altimeter setting not received, use Billings altimeter setting. Baro-VNAV and VDP NA when using Billings altimeter setting. Rwy 4 helicopter visibility reduction below 3/4 SM NA.</p>	

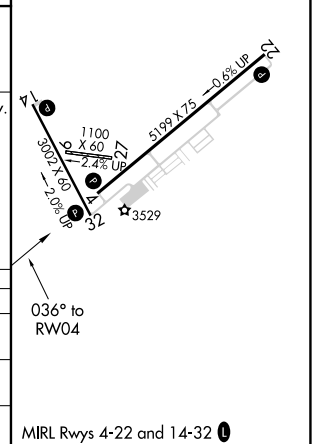
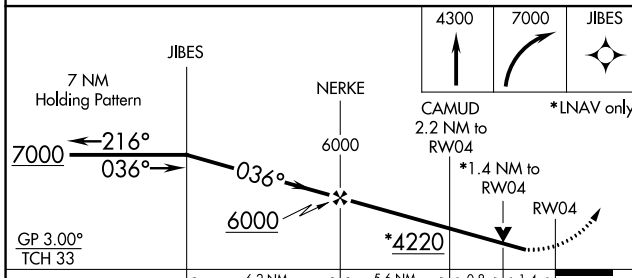
AWOS-2 135.05	BILLINGS APP CON 119.2 120.5 284.6	AUNICOM 123.05 (CTAF) 0
-------------------------	--	-----------------------------------



NW-1, 02 DEC 2021 to 30 DEC 2021

NW-1, 02 DEC 2021 to 30 DEC 2021

ELEV 3543	TDZE 3488
-----------	-----------



CATEGORY	A	B	C	D
LPV DA	3783-1 295 (300-1)			
LNAV/VNAV DA	3981-1 3/4 493 (500-1 3/4)			
LNAV MDA	3980-1 492 (500-1)	3980-1 3/8 492 (500-1 3/8)		

MIRL Rwy 4-22 and 14-32 0