

ST FRANCIS, KANSAS

AL-6795 (FAA)

21112

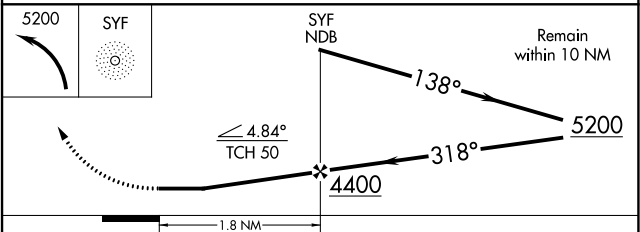
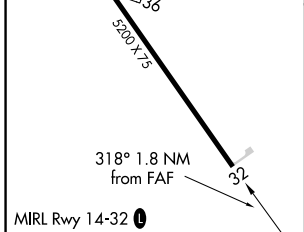
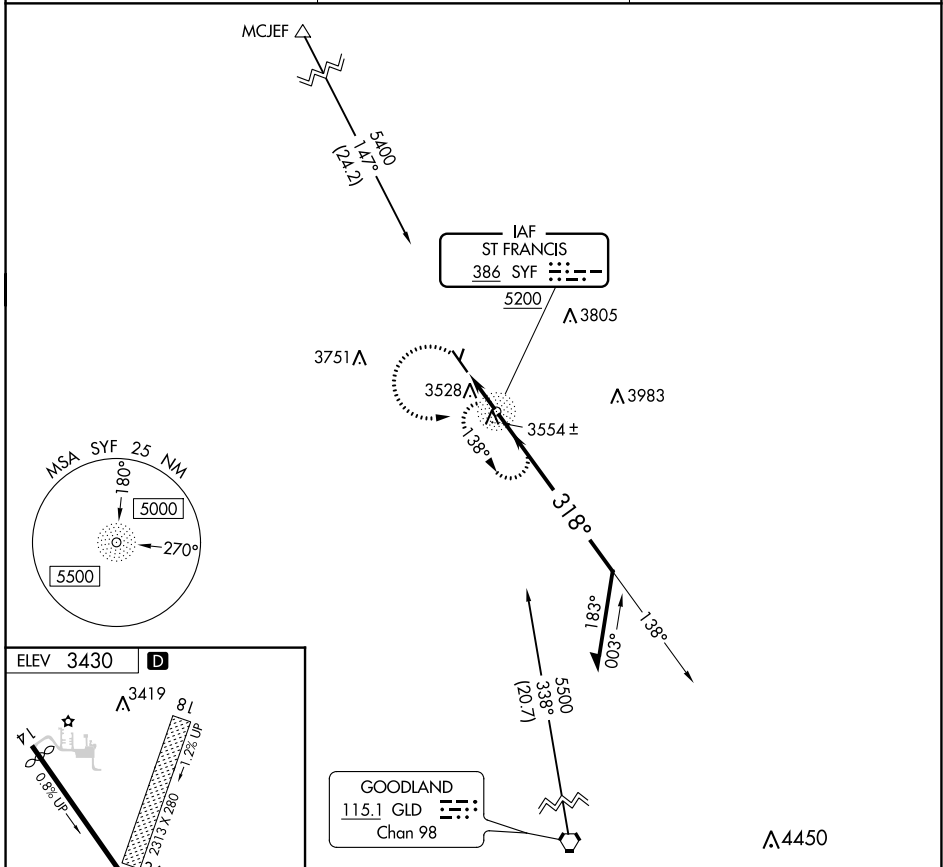
NDB SYF <b>386</b>	APP CRS <b>318°</b>	Rwy ldg TDZE Apt Elev	<b>N/A</b> <b>N/A</b> <b>3430</b>
-----------------------	------------------------	-----------------------------	---

# NDB-A

CHEYENNE COUNTY MUNI (SYF)

**⚠** Circling NA to Rwys 18 and 36. MISSED APPROACH: Climbing left turn to 5200 direct SYF NDB and hold, continue climb-in-hold to 5200.

AWOS-3 <b>118.925</b>	DENVER CENTER <b>132.7 226.675</b>	UNICOM <b>122.8 (CTAF) 0</b>
--------------------------	---------------------------------------	---------------------------------



FAF to MAP 1.8 NM					
Knots	60	90	120	150	180
Min:Sec	1:48	1:12	0:54	0:43	0:36

CATEGORY	A	B	C	D
<b>C</b> CIRCLING	3840-1 410 (500-1)	3880-1 450 (500-1)	3900-1½ 470 (500-1½)	NA

ST FRANCIS, KANSAS  
Orig-A 28FEB19

39°46'N-101°48'W

# NDB-A

CHEYENNE COUNTY MUNI (SYF)

NC-2, 02 DEC 2021 to 30 DEC 2021

NC-2, 02 DEC 2021 to 30 DEC 2021