

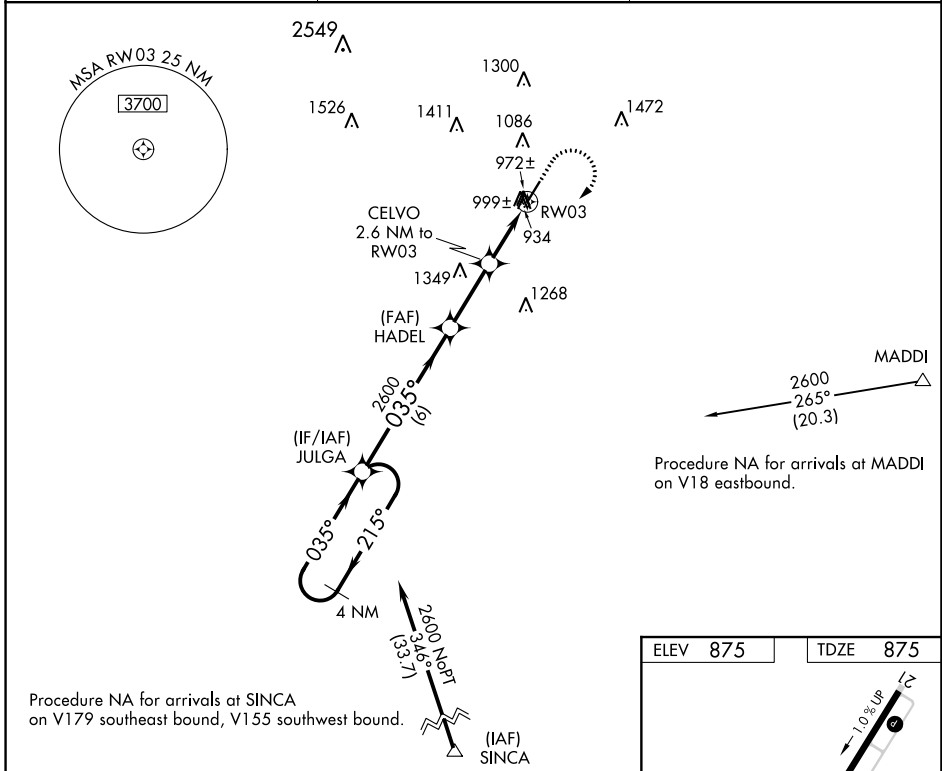
WAAS CH <b>93523</b> <b>W03A</b>	APP CRS <b>035°</b>	Rwy Idg TDZE <b>875</b> Apt Elev <b>875</b>
--	------------------------	---

# RNAV (GPS) RWY 3

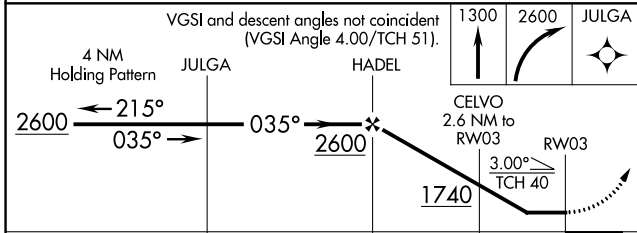
CY NUNNALLY MEML (D73)

RNP APCH.	MISSED APPROACH: Climb to 1300 then climbing right turn to 2600 direct JULGA and hold.
<p>▼ Rwy 3 helicopter visibility reduction below 1 SM NA. When local altimeter not received, use Athens altimeter setting and increase all MDA 60 feet and increase LP, LNAV and Circling Cat C visibility ¼ mile. Procedure NA at night.</p> <p>▲</p>	

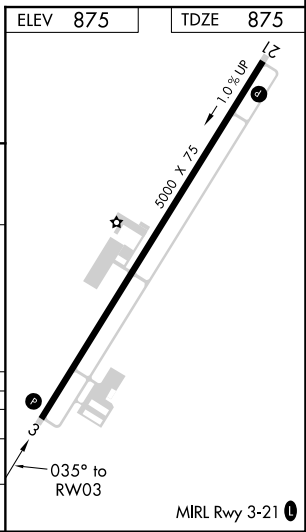
AWOS-3PT <b>120.825</b>	ATLANTA APP CON <b>126.975 239.275</b>	CTAF <b>122.9</b>
----------------------------	---	----------------------



Procedure NA for arrivals at SINCA on V179 southeast bound, V155 southwest bound.



CATEGORY	A	B	C	D
LP MDA	1240-1 365 (400-1)			NA
LNAV MDA	1260-1	385 (400-1)	1260-1½ 385 (400-1½)	NA
CIRCLING	1460-1	585 (600-1)	1580-2 705 (800-2)	NA



SE-4, 02 DEC 2021 to 30 DEC 2021

SE-4, 02 DEC 2021 to 30 DEC 2021