

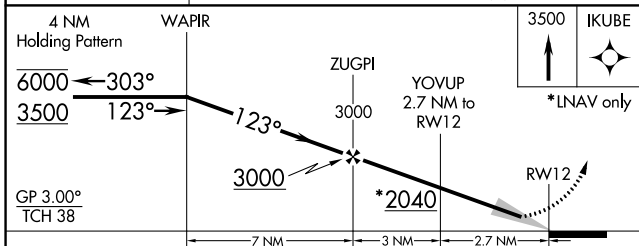
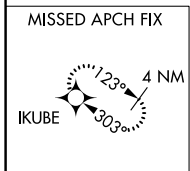
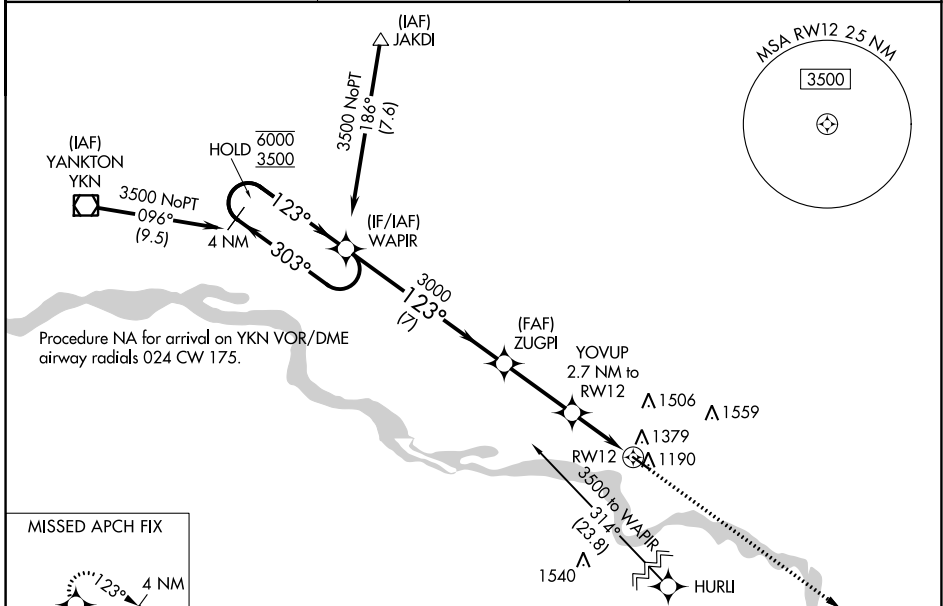
WAAS CH <b>72836</b> <b>W12A</b>	APP CRS <b>123°</b>	Rwy Idg TDZE <b>4105</b> 1147 Apt Elev <b>1147</b>
--	------------------------	---

# RNAV (GPS) RWY 12

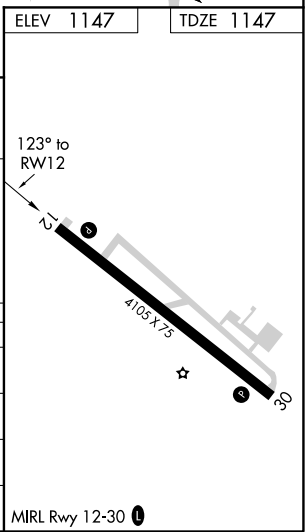
HAROLD DAVIDSON FIELD (VMR)

RNP APCH.		MISSED APPROACH: Climb to 3500 direct IKUBE and hold.
▼ ▲ NA	Baro-VNAV NA. Use Yankton altimeter setting.	

YKN AWOS-3PT <b>119.05</b>	SIoux CITY APP CON ★ <b>124.6 307.0</b>	AUNICOM <b>122.8 (CTAF) 0</b>
-------------------------------	--	----------------------------------



CATEGORY	A	B	C	D
LPV DA	1470-1	323 (400-1)		NA
LNAV/VNAV DA	1659-1½	512 (600-1½)		NA
LNAV MDA	1700-1	553 (600-1)	1700-1⅝ 553 (600-1⅝)	NA
CIRCLING	1760-1	613 (700-1)	1900-2¼ 753 (800-2¼)	NA



NC-1, 02 DEC 2021 to 30 DEC 2021

NC-1, 02 DEC 2021 to 30 DEC 2021