

WAAS CH 40436 W35A	APP CRS 354°	Rwy Idg TDZE Apt Elev	3406 1435 1437
--	------------------------	-----------------------------	---

RNAV (GPS) RWY 35

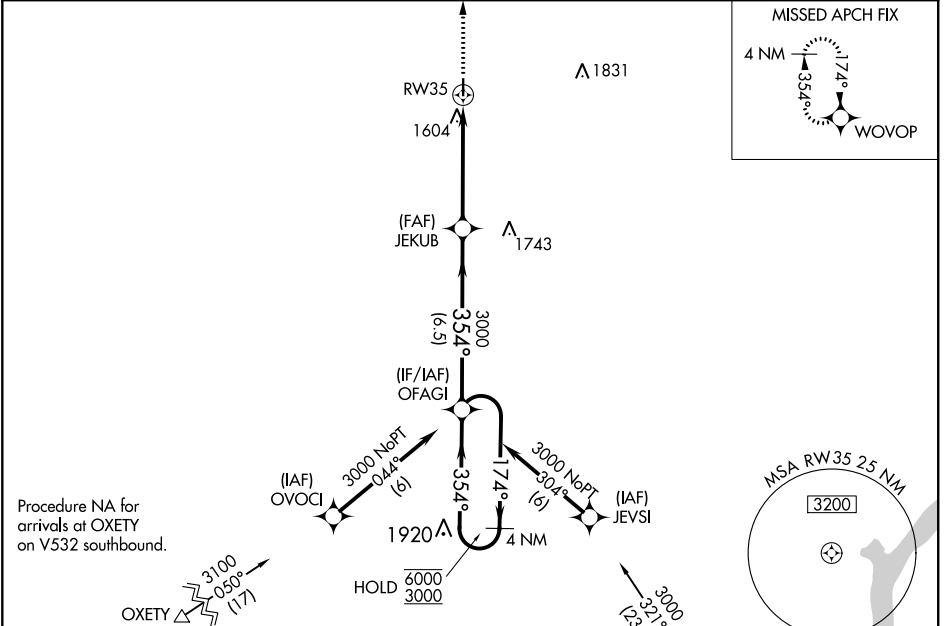
WASHINGTON COUNTY VETERAN'S MEML (K38)

RNP APCH.

▼ Circling Rwy 17 NA at night.
 ▲ NA Rwy 35 helicopter visibility reduction below ¾ SM NA.
 Baro-VNAV NA. Use Concordia altimeter setting.

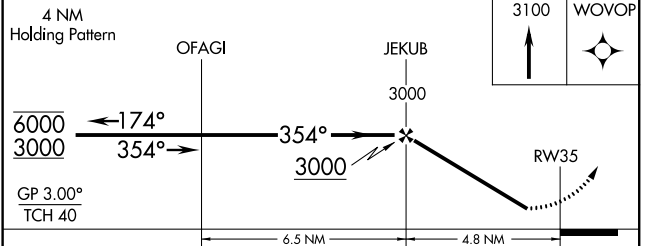
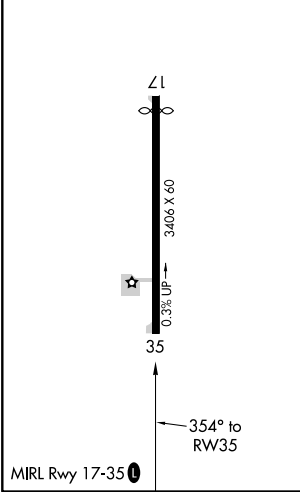
MISSED APPROACH: Climb to 3100 direct WOVOP and hold.

CNK ASOS 123.825	KANSAS CITY CENTER 127.35 257.975	CTAF 122.90
----------------------------	---	-----------------------



Procedure NA for arrivals at OXETY on V532 southbound.

ELEV 1437	TDZE 1435
-----------	-----------



CATEGORY	A	B	C	D
LPV DA	1762-1 ¹ / ₈	327 (400-1 ¹ / ₈)		NA
LNAV/VNAV DA	1805-1 ¹ / ₄	370 (400-1 ¹ / ₄)		NA
LNAV MDA	2020-1	585 (600-1)	2020-1 ³ / ₄ 585 (600-1 ³ / ₄)	NA
C CIRCLING	2020-1	583 (600-1)	2020-1 ³ / ₄ 583 (600-1 ³ / ₄)	NA

NC-2, 02 DEC 2021 to 30 DEC 2021

NC-2, 02 DEC 2021 to 30 DEC 2021