

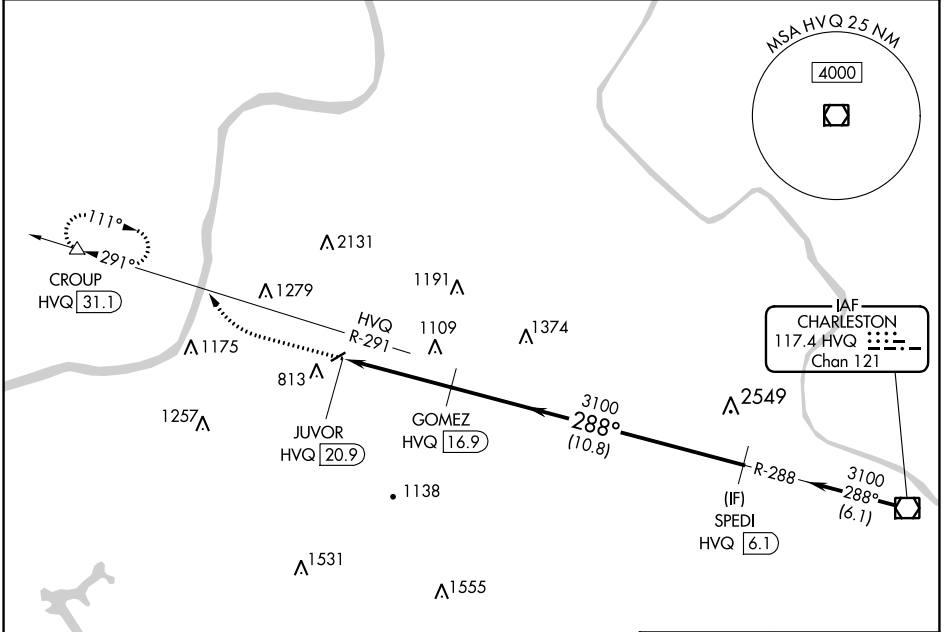
HVQ VOR/DME 117.4 Chan 121	APP CRS 288°	Rwy Idg TDZE Apt Elev N/A N/A 572
--	------------------------	---

VOR-A

ONA AIRPARK (12V)

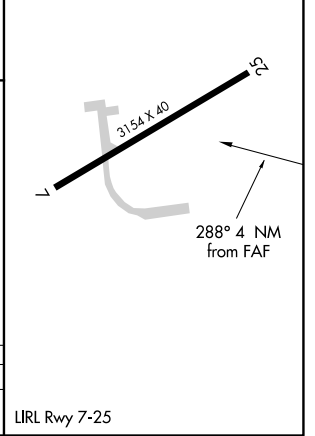
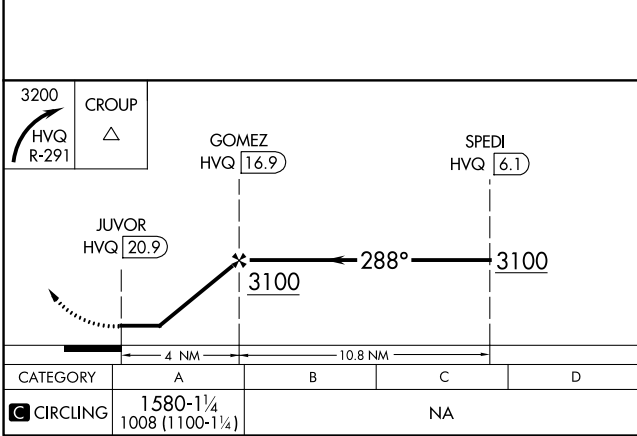
DME required.		MISSED APPROACH: Climbing right turn to 3200 on HVQ VOR/DME R-291 to CROUP/HVQ VOR/DME 31.1 and hold.
NA Circling NA northwest of Rwy 7-25. Procedure NA at night. Use Huntington altimeter setting; when not received, use Point Pleasant altimeter setting.		

HTS ASOS 125.2	CHARLESTON APP CON 124.1 269.125 (EAST)	HUNTINGTON APP CON 119.75 270.1 (WEST)	UNICOM 122.8 (CTAF)
--------------------------	---	--	-------------------------------



NE-4, 02 DEC 2021 to 30 DEC 2021

NE-4, 02 DEC 2021 to 30 DEC 2021



CATEGORY	A	B	C	D
CIRCLING	1580-1 1/4 1008 (1100-1 1/4)		NA	

LIRL Rwy 7-25