

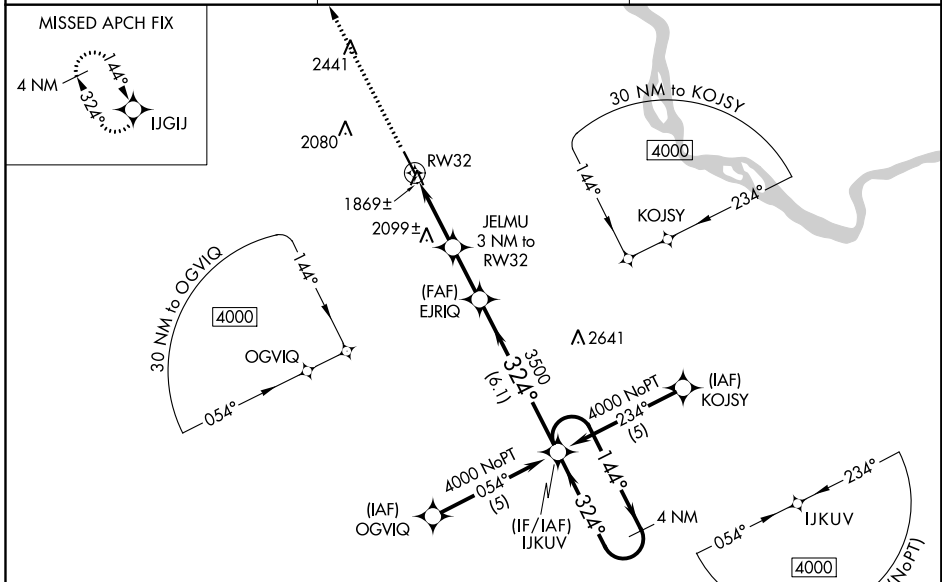
WAAS CH 53318 W32A	APP CRS 324°	Rwy Idg 4999 TDZE 1814 Apt Elev 1814
---------------------------------	------------------------	---

RNAV (GPS) RWY 32

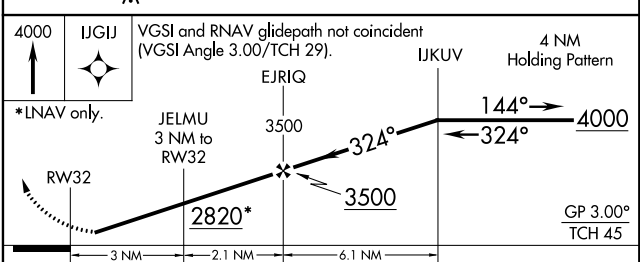
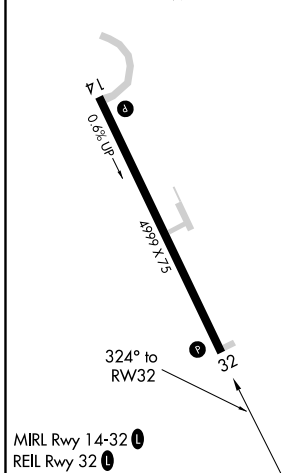
MERCER COUNTY RGNL (HZE)

RNP APCH.	When VGSI inoperative, procedure NA at night. Rwy 14 helicopter visibility reduction below 1 SM NA. When local altimeter setting not received, use Bismarck altimeter setting. For uncompensated Baro-VNAV systems, LNAV/VNAV NA below -18°C or above 54°C. Baro-VNAV NA when using Bismarck altimeter setting.	MISSED APPROACH: Climb to 4000 direct IJGIJ and hold.
-----------	---	---

AWOS-3PT 118.675	MINNEAPOLIS CENTER 124.25 236.825	UNICOM 122.8 (CTAF) 0
----------------------------	---	---------------------------------



ELEV 1814	TDZE 1814
------------------	------------------



CATEGORY	A	B	C	D
LPV DA	2192-1¼		378 (400-1¼)	NA
LNAV/VNAV DA	2352-2		538 (600-2)	NA
LNAV MDA	2480-1	666 (700-1)	2480-1¼ 666 (700-1¼)	NA
CIRCLING	2480-1	666 (700-1)	2480-1¼ 666 (700-1¼)	NA

NC-1, 02 DEC 2021 to 30 DEC 2021

NC-1, 02 DEC 2021 to 30 DEC 2021