

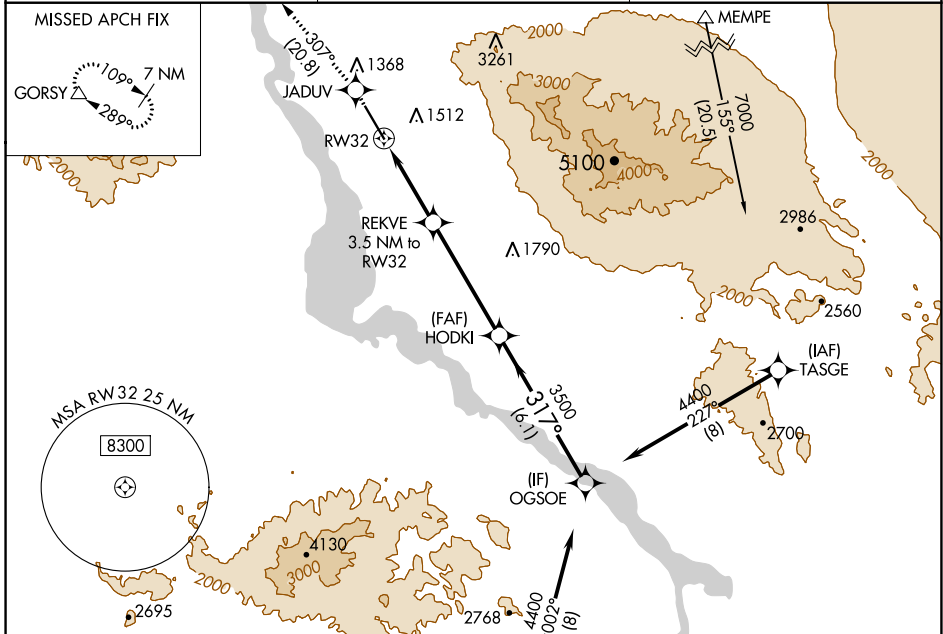
WAAS CH 49110 W32A	APP CRS 317°	Rwy Idg TDZE Apt Elev	8000 783 783
--	------------------------	-----------------------------	---

RNAV (GPS) RWY 32

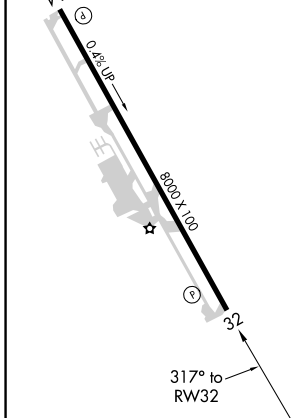
LAKE HAVASU CITY (HII)

RNP APCH.	<p>⚠ Circling NA northeast of Rwy 14-32. ⚠ Rwy 32 helicopter visibility reduction below ¾ SM NA.</p>	<p>MISSED APPROACH: Climb to 6300 direct JADUV and track 307° to GORSY and hold, continue climb-in-hold to 6300.</p>
-----------	--	--

AWOS-3 119.025	LOS ANGELES CENTER 134.65 360.65	UNICOM 122.7 (CTAF) 0
--------------------------	--	---------------------------------



ELEV 783	TDZE 783
REIL Rws 14 and 32	MIRL Rwy 14-32



6300	JADUV	tr 307°	GORSY	VGSI and RNAV glidepath not coincident (VGSI Angle 3.00/TCH 36).
*RNAV only.		REKVE 3.5 NM to RW32	HODKI 3500	OGSOE 4400
RW32		*2.6 NM to RW32	1940*	GP 3.00° TCH 50
-2.6 NM		0.9	4.7 NM	6.1 NM

CATEGORY	A	B	C	D
LPV DA	1265-1⅓ 482 (500-1⅓)			
RNAV MDA	1660-1 877 (900-1)	1660-1¼ 877 (900-1¼)	1660-2½ 877 (900-2½)	2180-3 1397 (1400-3)
CIRCLING	1660-1¼ 877 (900-1¼)	1800-3 1017 (1100-3)	2180-3 1397 (1400-3)	

SW-4, 02 DEC 2021 to 30 DEC 2021

SW-4, 02 DEC 2021 to 30 DEC 2021