

WAAS CH 77914 W18A	APP CRS 177°	Rwy Idg TDZE 104 Apt Elev 107
--	------------------------	---

RNAV (GPS) RWY 18

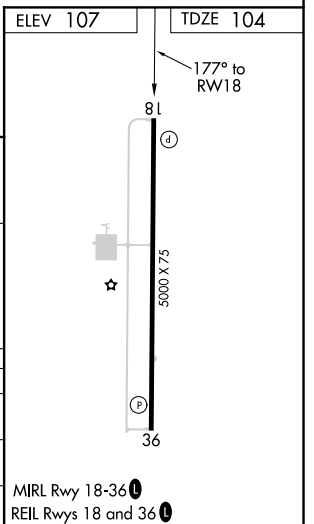
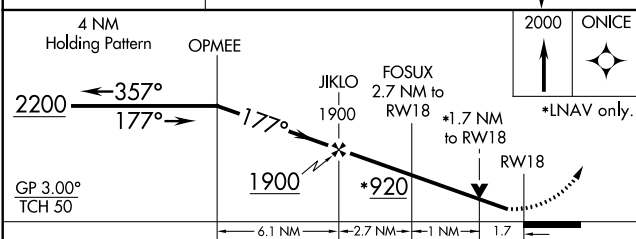
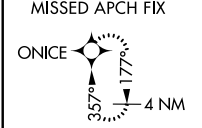
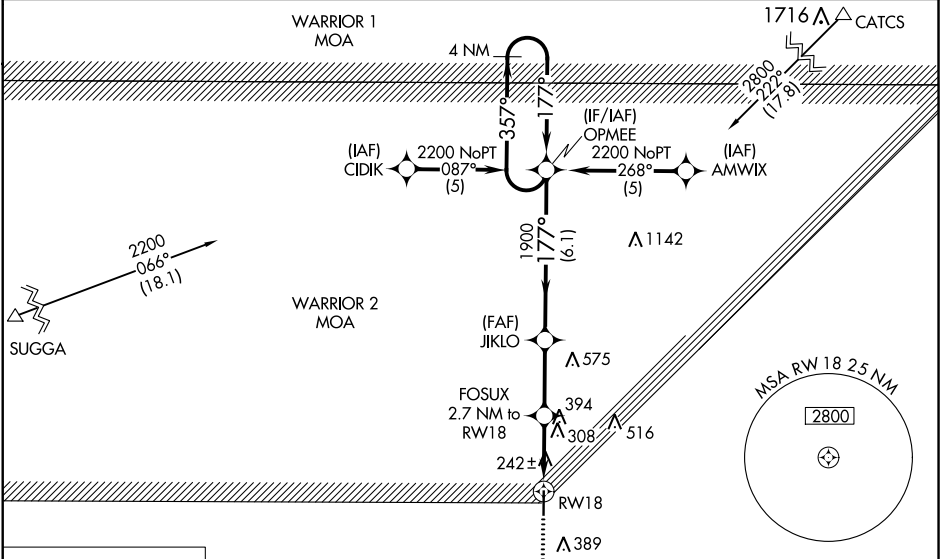
ALLEN PARISH (ACP)

RNP APCH.

▼ Baro-VNAV NA when using Alexandria Intl altimeter setting. For uncompensated Baro-VNAV systems, LNAV/VNAV NA below -15°C or above 54°C. Rwy 18 helicopter visibility reduction below ¾ SM NA. VDP NA when using Alexandria Intl altimeter setting. When local altimeter setting not received, use Alexandria Intl altimeter setting: increase all DA 84 feet; increase all MDA 100 feet; increase LPV and LNAV/VNAV all Cats visibility ¼ SM and increase LNAV Cat C visibility ½ SM.

▲ MISSED APPROACH: Climb to 2000 direct ONICE and hold.

AWOS-3PT 118.275	POLK APP CON 123.7 261.3	UNICOM 122.8 (CTAF) 0
----------------------------	------------------------------------	---------------------------------



CATEGORY	A	B	C	D
LPV DA	515-1½	411 (500-1½)		NA
LNAV/VNAV DA	549-1½	445 (500-1½)		NA
LNAV MDA	700-1	596 (600-1)	700-1¾ 596 (600-1¾)	NA

SC-4, 02 DEC 2021 to 30 DEC 2021

SC-4, 02 DEC 2021 to 30 DEC 2021