

WAAS CH 49214 W36A	APP CRS 357°	Rwy Idg TDZE Apt Elev	5000 107 107
--	------------------------	-----------------------------	---

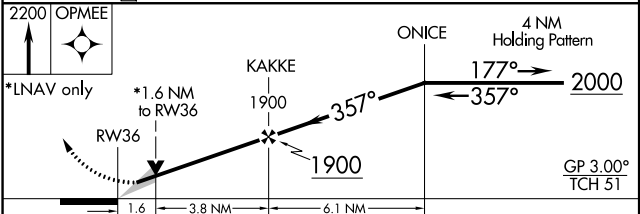
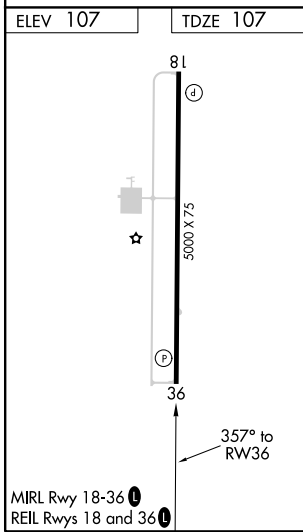
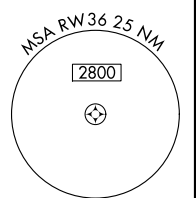
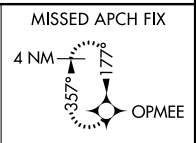
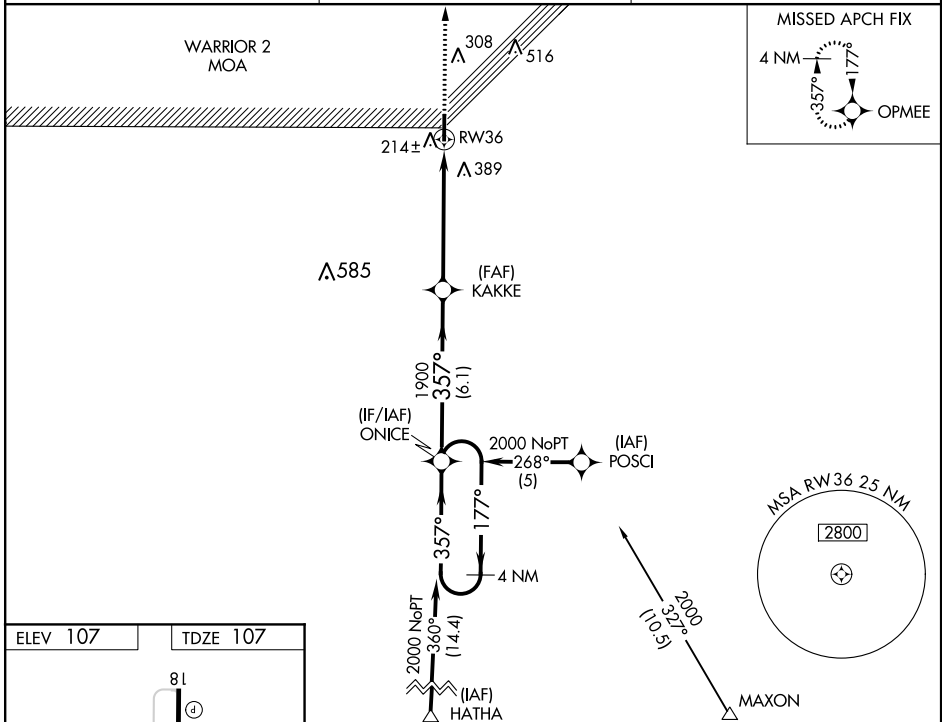
RNAV (GPS) RWY 36

ALLEN PARISH (ACP)

⚠ Baro-VNAV NA when using Alexandria Intl altimeter setting. For uncompensated Baro-VNAV systems, LNAV/VNAV NA below -15°C (5°F) or above 54°C (130°F). DME/DME RNP-0.3 NA. VDP NA when using Alexandria Intl altimeter setting. When local altimeter setting not received, use Alexandria Intl altimeter setting and increase all DA 84 feet, all MDA 100 feet. Increase LPV all Cats, LNAV Cat C and Circling Cat C visibility ¼ mile, and LNAV/VNAV all Cats visibility ½ mile.

⚠ MISSED APPROACH: Climb to 2200 direct OPMEE and hold.

AWOS-3PT 118.275	POLK APP CON 123.7 261.3	UNICOM 122.8 (CTAF)
----------------------------	------------------------------------	-------------------------------



CATEGORY	A	B	C	D
LPV DA		413-1	306 (400-1)	NA
LNAV/VNAV DA		702-2	595 (600-2)	NA
LNAV MDA	660-1	553 (600-1)	660-1½ 553 (600-1½)	NA
CIRCLING	660-1 553 (600-1)	740-1 633 (700-1)	740-1½ 633 (700-1½)	NA

SC-4, 02 DEC 2021 to 30 DEC 2021

SC-4, 02 DEC 2021 to 30 DEC 2021