

| | | |
|-------------|----------|-------------|
| APP CRS | Rwy Idg | 4405 |
| 173° | TDZE | 6 |
| | Apt Elev | 7 |

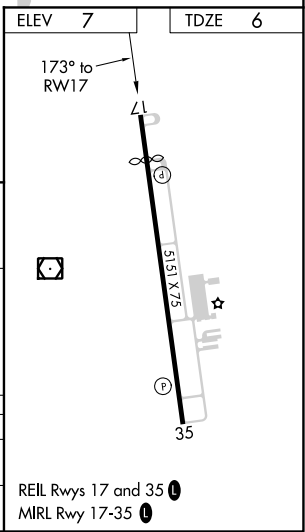
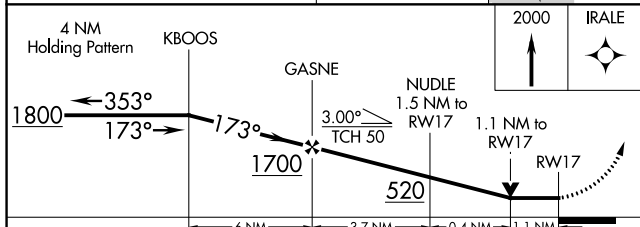
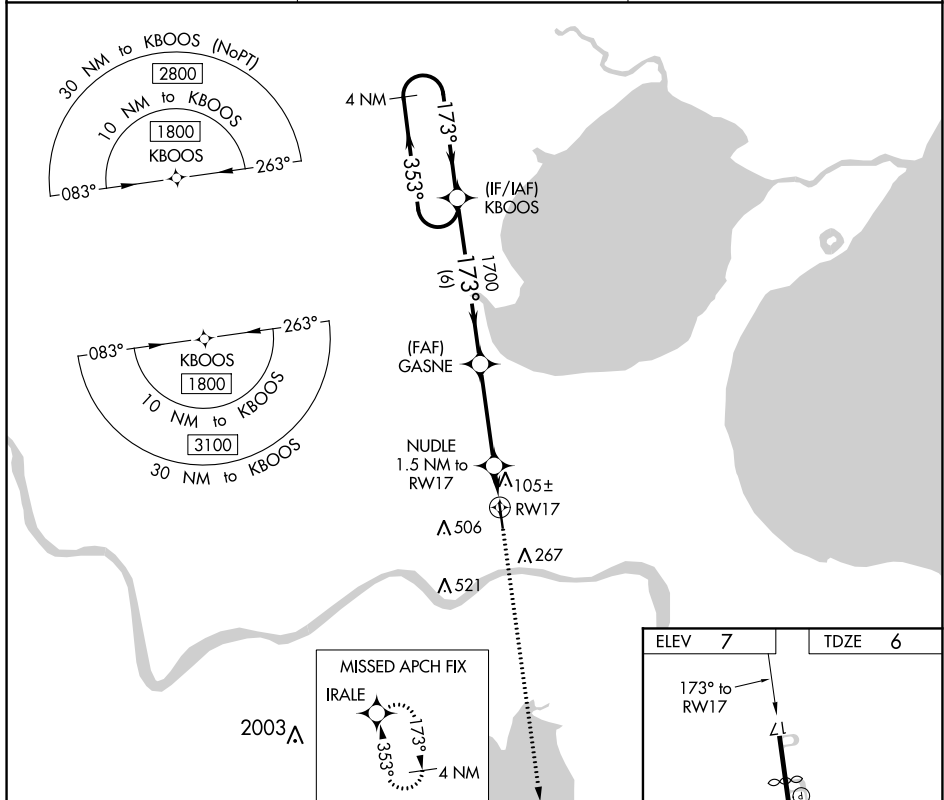
RNAV (GPS) RWY 17

PORT OF SOUTH LOUISIANA EXEC RGNL (APS)

⚠ Rwy 17 helicopter visibility reduction below 3/4 SM NA. DME/DME RNP-0.3 NA.
⚠ When local altimeter setting not received, use Louis Armstrong New Orleans Intl altimeter setting and increase all MDA 60 feet, increase LNAV Cat C visibility 1/4 SM. VDP NA when using Louis Armstrong New Orleans Intl altimeter setting.

MISSED APPROACH: Climb to 2000 direct IRALE and hold.

| | | |
|---------------------------|--|---------------------------------|
| AWOS-3PT 125.45 | NEW ORLEANS APP CON 125.5 350.35 | UNICOM 122.7 (CTAF) 0 |
|---------------------------|--|---------------------------------|



| CATEGORY | A | B | C | D |
|-------------------|-------|-------------|------------------------------|----|
| LNAV MDA | 400-1 | 394 (400-1) | 400-1 1/8 394 (400-1 1/8) | NA |
| C CIRCLING | 700-1 | 693 (700-1) | 820-2 1/2 813 (900-2 1/2) | NA |

SC-4, 02 DEC 2021 to 30 DEC 2021

SC-4, 02 DEC 2021 to 30 DEC 2021