

VORTAC DNV 111.0 Chan 47	APP CRS 268°	Rwy ldg TDZE Apt Elev	5001 733 738
---------------------------------------	------------------------	-----------------------------	---

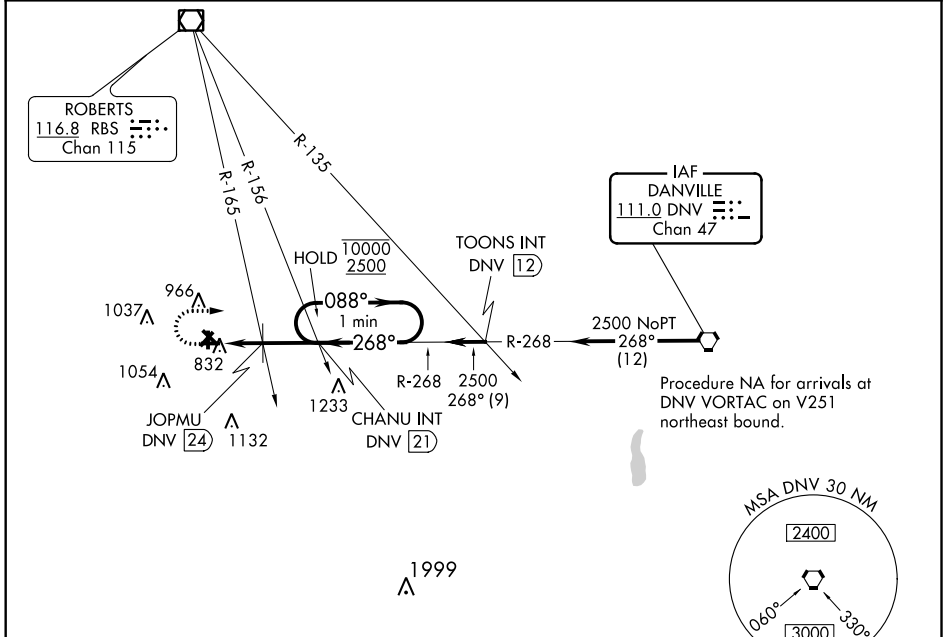
VOR RWY 27

RANTOUL NTL AVN CNTR-FRANK ELLIOTT FLD (TIP)

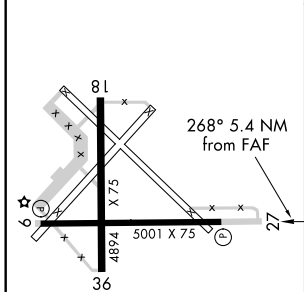
▽
▲

MISSED APPROACH: Climb to 2000, then climbing right turn to 2500 on DNV VORTAC R-268 to CHANU INT/DNV 21 DME and hold.

AWOS-3 119.025	CHAMPAIGN APP CON ★ 121.35 285.65	UNICOM 123.0 (CTAF) ①
--------------------------	---	---------------------------------



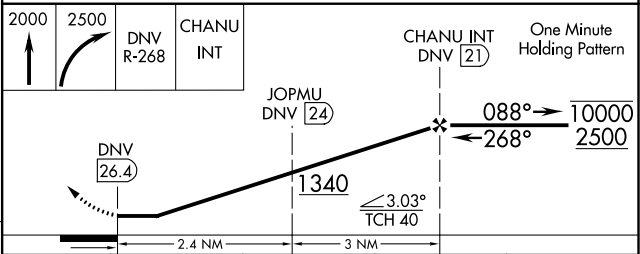
ELEV 738	TDZE 733
----------	----------



REIL Rws 9 and 27 ①
MIRL Rws 9-27 and 18-36 ①

FAF to MAP 5.4 NM

Knots	60	90	120	150	180
Min:Sec	5:24	3:36	2:42	2:10	1:48



CATEGORY	A	B	C	D
S-27	1340-1	607 (700-1)	1340-1¾	607 (700-1¾)
C CIRCLING	1340-1	602 (700-1)	1380-1¾ 642 (700-1¾)	1420-2¼ 682 (700-2¼)
JOPMU FIX MINIMUMS (DUAL VOR RECEIVERS OR DME REQUIRED)				
S-27	1240-1	507 (600-1)	1240-1⅝	507 (600-1⅝)
C CIRCLING	1240-1	502 (600-1)	1280-1 642 (700-1¾)	1420-2¼ 682 (700-2¼)

VOR RWY 27

EC-3, 02 DEC 2021 to 30 DEC 2021

EC-3, 02 DEC 2021 to 30 DEC 2021