

APP CRS 323°	Rwy Idg TDZE Apt Elev	N/A N/A 5335
------------------------	-----------------------------	---

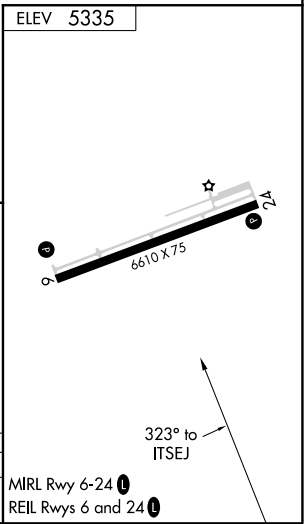
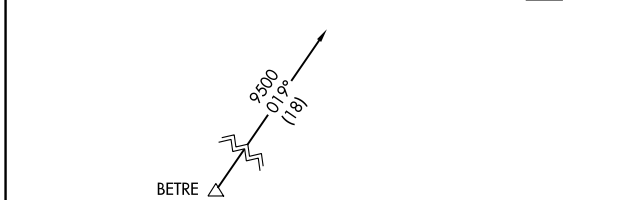
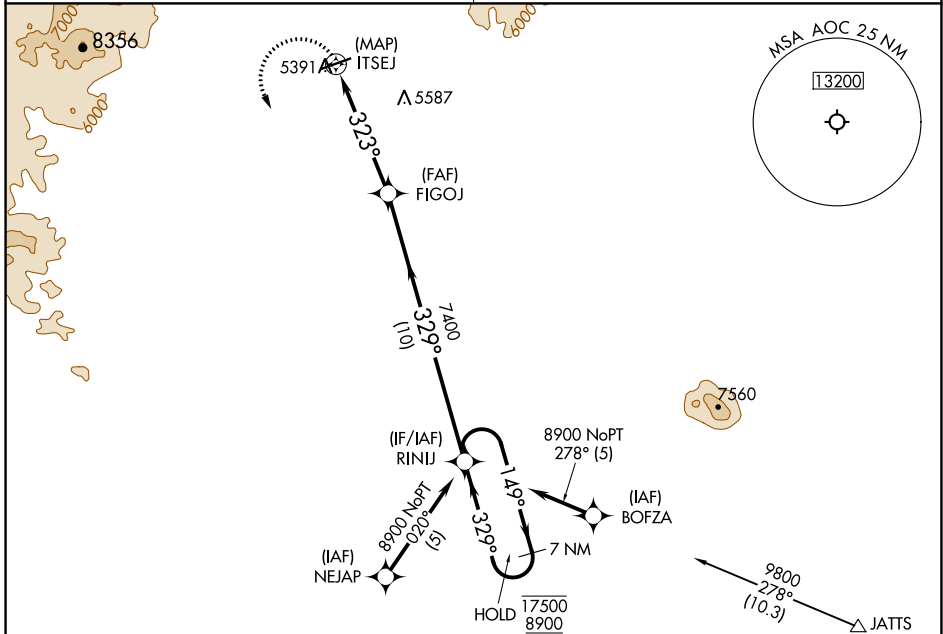
RNAV (GPS)-A
ARCO-BUTTE COUNTY (AOC)

RNP APCH.
 ⚠️ NA Circling NA for Cats C and D northwest of Rwy 6-24. When local altimeter setting not received, use Pocatello Rgnl altimeter setting and increase all MDAs 600 feet. Increase Cat A/B visibility to 1¼ SM and Cat C visibility to 3 SM.

MISSED APPROACH: Climbing left turn to 8900 direct RINIJ and hold, continue climb in hold to 8900.

SALT LAKE CENTER
128.35 239.25

UNICOM
122.8 (CTAF)



8900	RINIJ	RINIJ	
		7 NM Holding Pattern	
ITSEJ	FIGOJ	149° → 17500	← 329° 8900
5 NM		10 NM	

CATEGORY	A	B	C	D
CIRCLING	5920-1	585 (600-1)	5940-1¼ 605 (700-1¼)	6680-3 1345 (1400-3)

NW-1, 02 DEC 2021 to 30 DEC 2021

NW-1, 02 DEC 2021 to 30 DEC 2021