

WAAS CH <b>77726</b> <b>W02A</b>	APP CRS <b>019°</b>	Rwy Idg TDZE <b>966</b> Apt Elev <b>972</b>	<b>4001</b>
--	------------------------	---	-------------

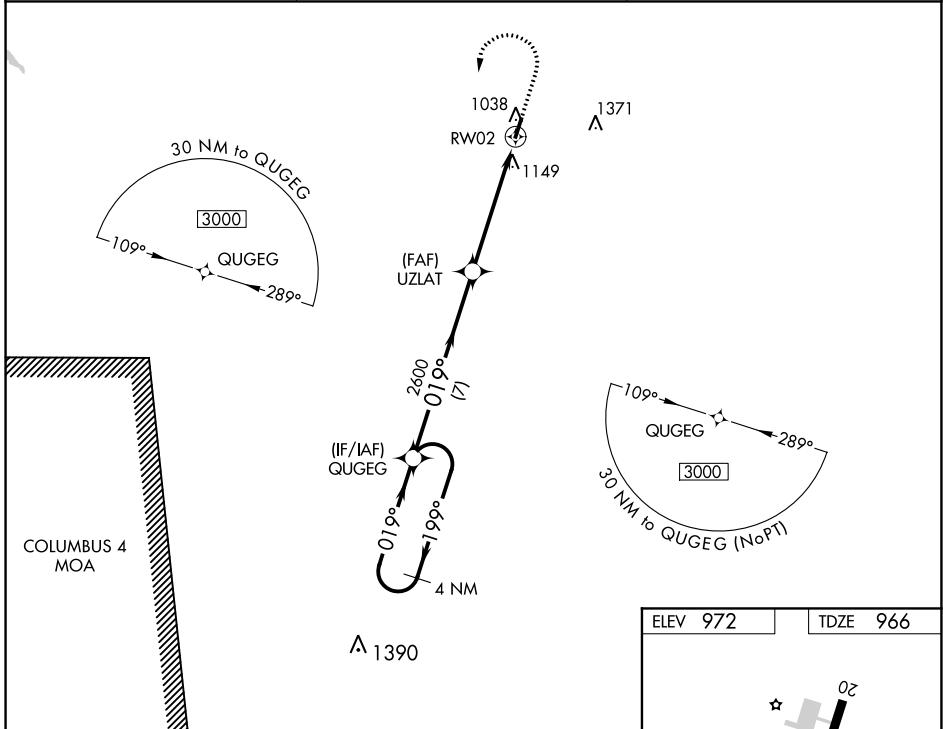
# RNAV (GPS) RWY 2

PAUL BRIDGES FLD (ØM3)

**∇** DME/DME RNP-0.3 NA. Use Lawrenceburg altimeter setting, when not received, use Muscle Shoals altimeter setting and increase all MDA 120 feet; increase LP and LNAV Cat C visibility 3/8 SM and Circling Cat C visibility 1/2 SM. Procedure NA at night.  
**Δ** RWY 2, 20 helicopter visibility reduction NA.

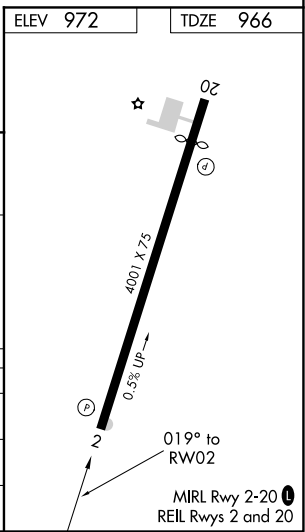
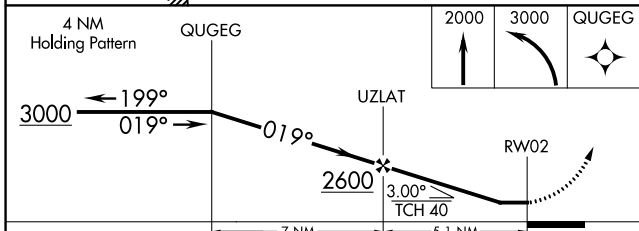
**MISSED APPROACH:** Climb to 2000 then climbing left turn to 3000 direct QUGEG and hold.

2M2 AWOS-3 <b>120.175</b>	MEMPHIS CENTER <b>125.85 379.25</b>	UNICOM <b>122.8 (CTAF) 0</b>
------------------------------	--	---------------------------------



SE-1, 02 DEC 2021 to 30 DEC 2021

SE-1, 02 DEC 2021 to 30 DEC 2021



CATEGORY	A		B	C	D
	LP MDA	1520-1	554 (600-1)		1520-1½ 554 (600-1½)
LNAV MDA	1520-1	554 (600-1)		1520-1½ 554 (600-1½)	NA
CIRCLING	1580-1	608 (700-1)		1740-2¼ 768 (800-2¼)	NA