

APP CRS	Rwy Idg	N/A
189°	TDZE	N/A
	Apt Elev	4492

RNAV (GPS)-A

MCCARLEY FLD (U02)

RNP APCH.

▼ Use Pocatello altimeter setting, when not received use Idaho Falls altimeter setting. Helicopter visibility reduction below 1 SM NA.

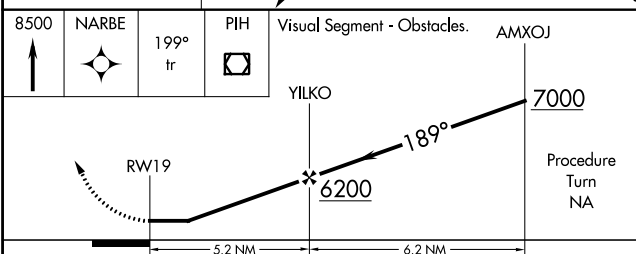
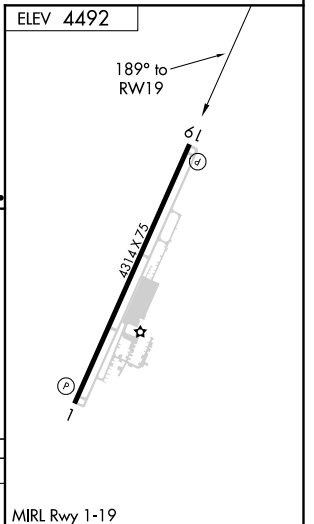
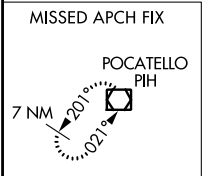
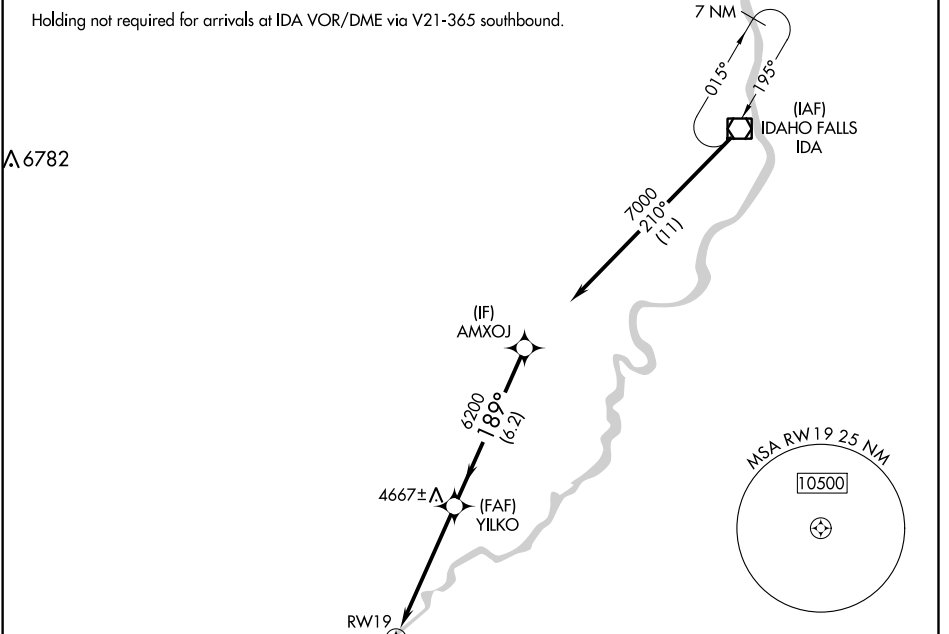
▲ NA

MISSED APPROACH: Climb to 8500 direct NARBE and on 199° track to PIH VOR/DME and hold.

SALT LAKE CITY CENTER 128.35 239.25	UNICOM 122.8 (CTAF)
---	-------------------------------

Holding not required for arrivals at IDA VOR/DME via V21-365 southbound.

▲ 6782



CATEGORY	A	B	C	D
CIRCLING	5340-1¼	848 (900-1¼)	5380-2¾ 888 (900-2¾)	5900-3 1408 (1500-3)

NW-1, 02 DEC 2021 to 30 DEC 2021

NW-1, 02 DEC 2021 to 30 DEC 2021