

| | | | |
|--|------------------------|-----------------------------|---|
| WAAS CH 53526 W02A | APP CRS 016° | Rwy Idg TDZE Apt Elev | 4000 341 348 |
|--|------------------------|-----------------------------|---|

RNAV (GPS) RWY 2

HOUSTON COUNTY (DKR)

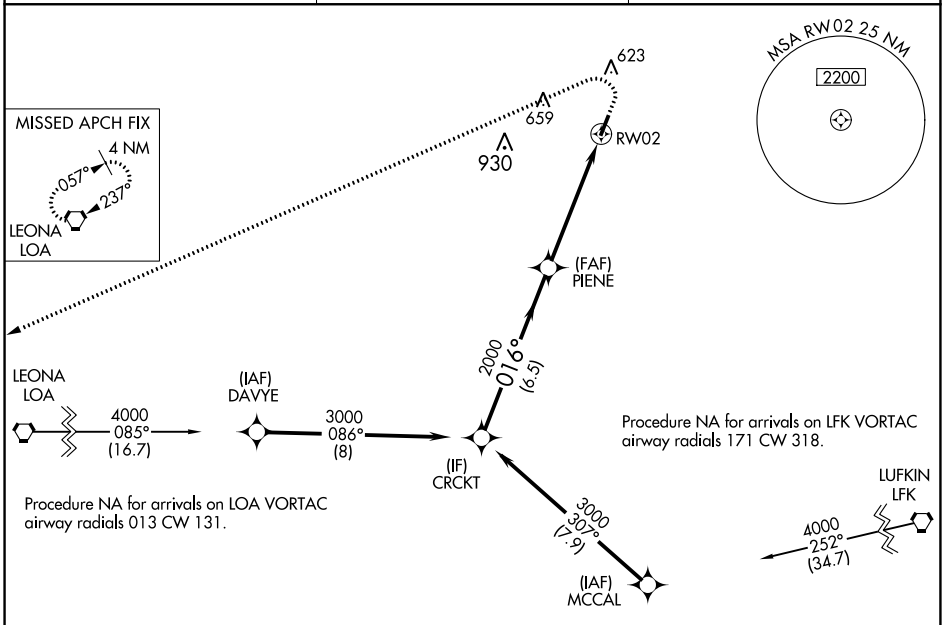
⚠ DME/DME RNP-0.3 NA. When local altimeter setting not received, use Palestine altimeter setting and increase all MDA 100 feet. Procedure NA at night. Helicopter visibility reduction below 1 SM NA.

MISSED APPROACH: Climb to 1000 then climbing left turn to 4000 direct LOA VORTAC and hold.

AWOS-3PT
118.775

HOUSTON CENTER
134.8 269.6

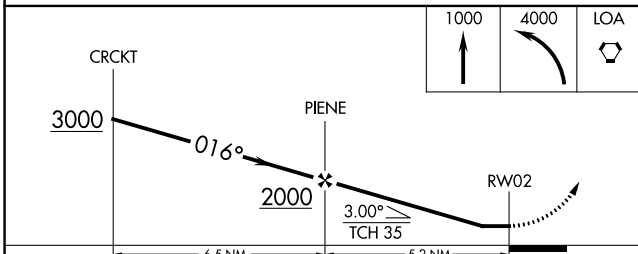
CTAF
122.9 0



SC-5, 02 DEC 2021 to 30 DEC 2021

SC-5, 02 DEC 2021 to 30 DEC 2021

| | |
|----------|----------|
| ELEV 348 | TDZE 341 |
|----------|----------|



| CATEGORY | A | | B | | C | | D | |
|----------|-----|-------|-----|---------|----|-----|----|-----|
| | LP | MDA | LP | MDA | LP | MDA | LP | MDA |
| LP | MDA | 820-1 | 479 | (500-1) | NA | | | |
| LP | MDA | 840-1 | 499 | (500-1) | NA | | | |
| CIRCLING | | 880-1 | 532 | (600-1) | NA | | | |

