

WAAS CH <b>86317</b> W18A	APP CRS <b>175°</b>	Rwy Idg TDZE <b>1434</b> Apt Elev <b>1434</b>
---------------------------------	------------------------	---

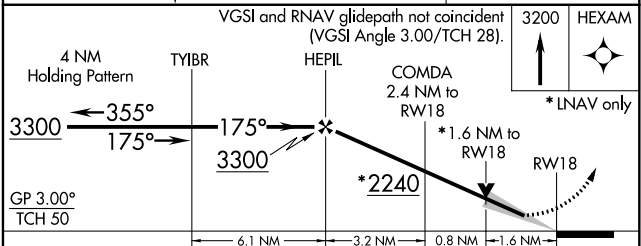
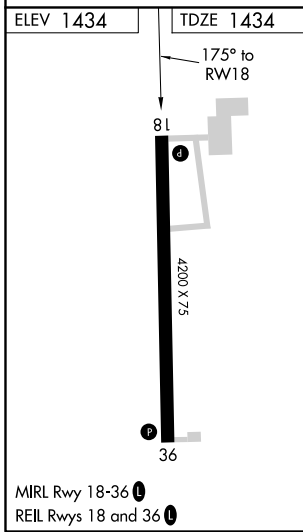
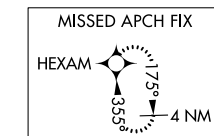
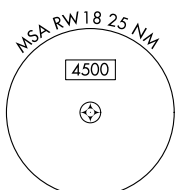
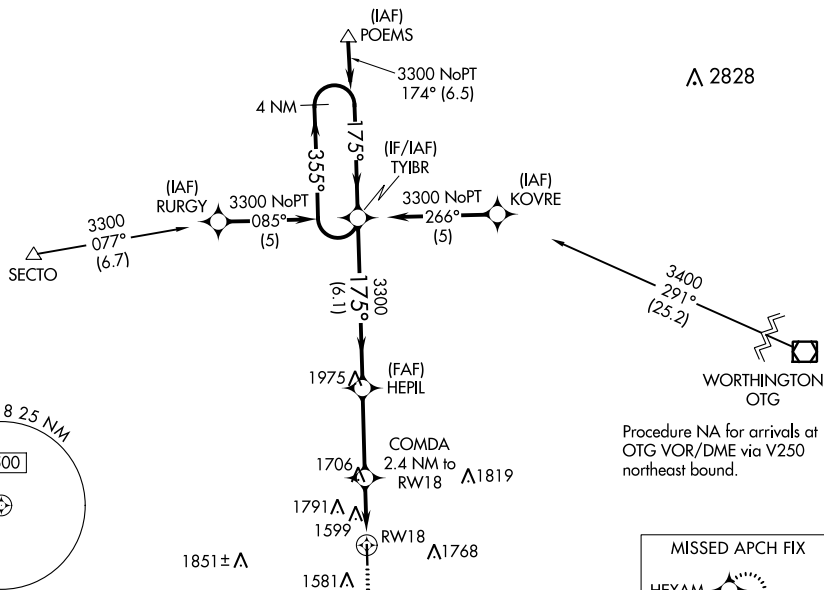
# RNAV (GPS) RWY 18

QUENTIN AANENSON FIELD (LYV)

**NA** For uncompensated Baro-VNAV systems, LNAV/VNAV NA below -17°C (2°F) or above 46°C (114°F). DME/DME RNP-0.3 NA. When local altimeter setting not received, use Pipestone altimeter setting and increase all DA 94 feet and all MDA 100 feet. Increase LNAV/VNAV all Cats, LNAV and Circling Cat C/D visibility ¼ mile. Baro-VNAV and VDP NA when using Pipestone altimeter setting.

MISSED APPROACH: Climb to 3200 direct HEXAM and hold.

AWOS-3 <b>119.825</b>	SIOUX FALLS APP CON * <b>125.8 284.725</b>	UNICOM <b>122.7 (CTAF)</b>
--------------------------	---	-------------------------------



CATEGORY	A	B	C	D
LPV DA	1634-1 200 (200-1)			
LNAV/VNAV DA	2131-2½ 697 (700-2½)			
LNAV MDA	1960-1 526 (600-1)	1960-1½ 526 (600-1½)	1960-1¾ 526 (600-1¾)	1960-1¾ 526 (600-1¾)
CIRCLING	1960-1 526 (600-1)	2140-2 706 (800-2)	2140-2½ 706 (800-2½)	2140-2½ 706 (800-2½)

NC-1, 02 DEC 2021 to 30 DEC 2021

NC-1, 02 DEC 2021 to 30 DEC 2021