

WAAS CH 40117 W36A	APP CRS 355°	Rwy Idg TDZE 1432 Apt Elev 1434
--	------------------------	---

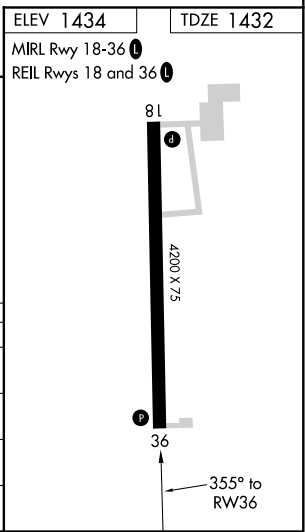
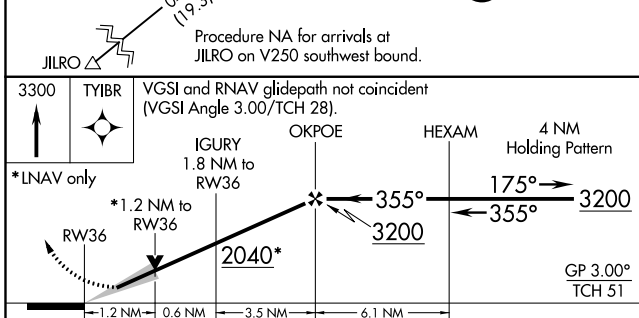
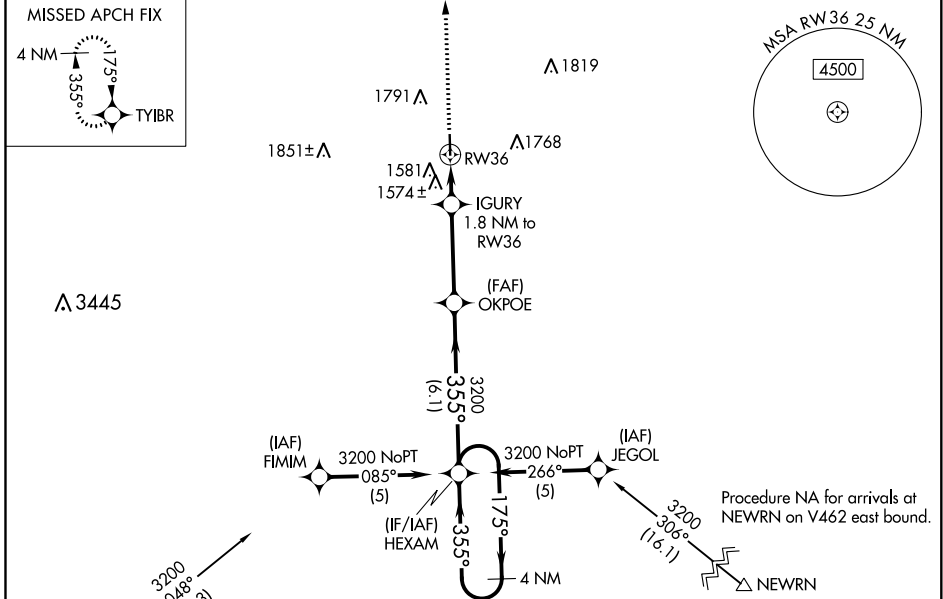
RNAV (GPS) RWY 36

QUENTIN AANENSON FIELD (LYV)

NA For uncompensated Baro-VNAV systems, LNAV/VNAV NA below -17°C (2°F) or above 46°C (114°F). DME/DME RNP-0.3 NA. When local altimeter setting not received, use Pipestone altimeter setting and increase all DA 94 feet and all MDA 100 feet, increase LNAV/VNAV all Cats visibility ½ mile and LNAV and Circling Cats C/D visibility ¼ mile. Baro-VNAV and VDP NA when using Pipestone altimeter setting.

MISSED APPROACH:
Climb to 3300 direct TYIBR and hold.

AWOS-3 119.825	SIOUX FALLS APP CON * 125.8 284.725	UNICOM 122.7 (CTAF)
--------------------------	---	-------------------------------



CATEGORY	A	B	C	D
LPV DA	1632-1 200 (200-1)			
LNAV/VNAV DA	1882-1½ 450 (500-1½)			
LNAV MDA	1840-1 408 (500-1)	1840-1¼ 408 (500-1¼)		
CIRCLING	1940-1 506 (600-1)	2140-2 706 (800-2)	2140-2¼ 706 (800-2¼)	

NC-1, 02 DEC 2021 to 30 DEC 2021

NC-1, 02 DEC 2021 to 30 DEC 2021