

WAAS CH 40031 W18A	APP CRS 183°	Rwy Idg TDZE Apt Elev	5001 286 286
--	------------------------	-----------------------------	---

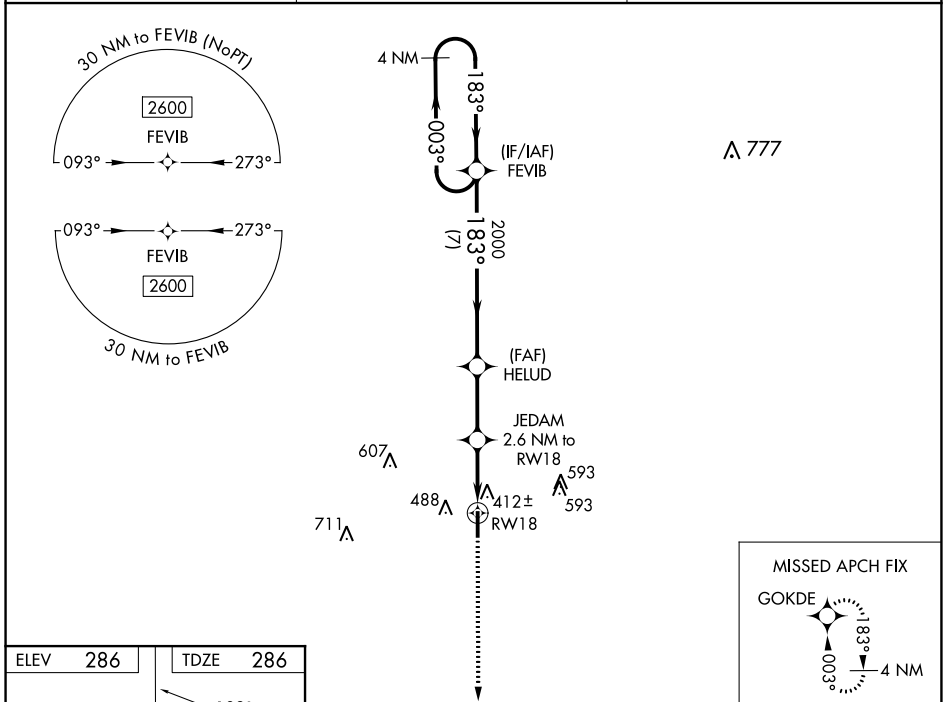
RNAV (GPS) RWY 18

ATMORE MUNI (ØR1)

⚠ Baro-VNAV NA. Helicopter visibility reduction below 1 SM NA. DME/DME RNP-0.3 NA. Use Brewton altimeter setting.

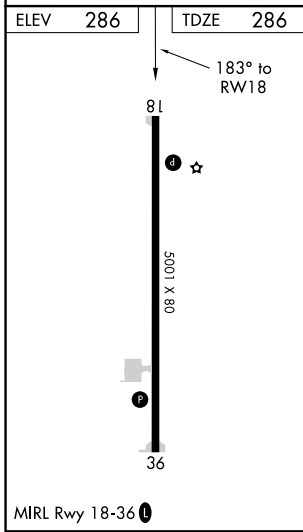
⚠ NA MISSED APPROACH: Climb to 2600 direct GOKDE and hold.

12J AWOS-3PT 119.325	PENSACOLA APP CON 127.35 291.625	UNICOM 122.8 (CTAF) 0
--------------------------------	--	---------------------------------



SE-4, 02 DEC 2021 to 30 DEC 2021

SE-4, 02 DEC 2021 to 30 DEC 2021



2600	GOKDE	VGSI and RNAV glidepath not coincident (VGSI Angle 3.00/TCH 40).	4 NM Holding Pattern	
*LNAV only.				
CATEGORY	A	B	C	D
LPV DA	613-1 327 (400-1)			
LNAV/VNAV DA	653-1 367 (400-1)			
LNAV MDA	740-1	454 (500-1)	740-1 ³ / ₈	454 (500-1 ³ / ₈)
C CIRCLING	880-1	594 (600-1)	980-2 694 (700-2)	1000-2 ¹ / ₄ 714 (800-2 ¹ / ₄)