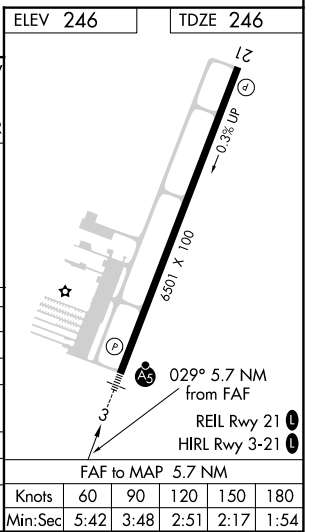
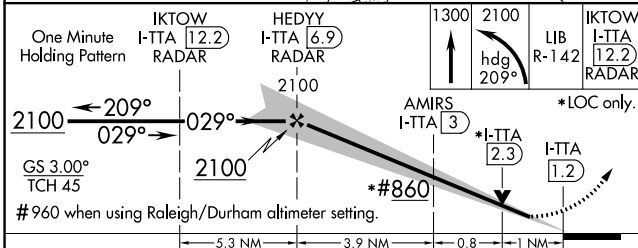
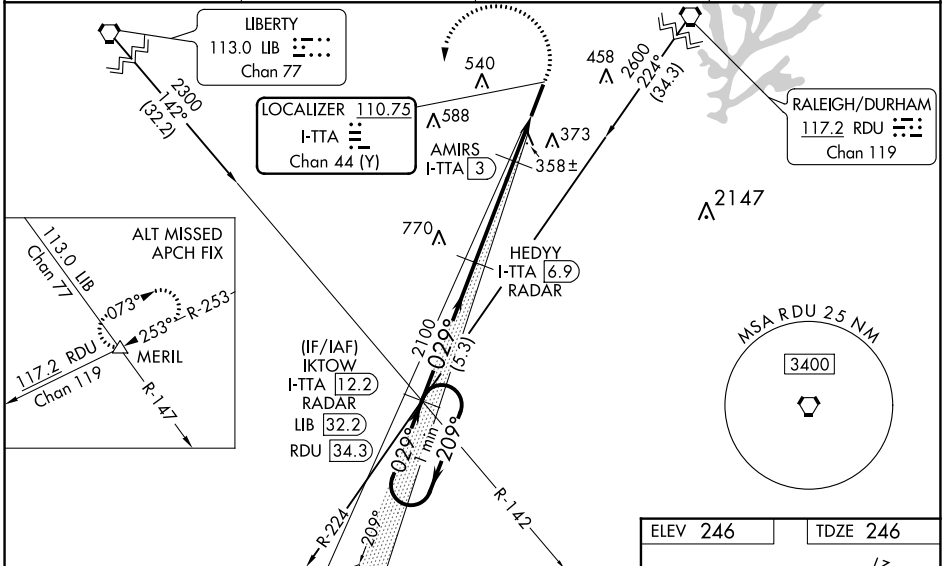


LOC/DME I-TTA <b>110.75</b> Chan 44 (Y)	APP CRS <b>029°</b>	Rwy Idg <b>6501</b> TDZE <b>246</b> Apt Elev <b>246</b>
---	------------------------	---

**RALEIGH EXECUTIVE JETPORT AT SANFORD-LEE COUNTY (TTA)**  
**ILS Z or LOC Z RWY 3**

DME required for LOC only.		<p>MALSRL</p>	<p>MISSED APPROACH: Climb to 1300 then climbing left turn to 2100 on heading 209° and LIB VORTAC R-142 to IKTOW INT/I-TTA 12.2 DME/RADAR and hold.</p>
<p>When local altimeter setting not received, use Raleigh/Durham altimeter setting: increase DA to 527 feet; increase all MDAs 100 feet and S-LOC 3 Cats C and D visibility to 1 1/2 SM, increase Circling Cat C visibility to 2 SM and Cat D to 2 1/2 SM; AMIRS FIX MINIMUMS: increase S-LOC 3 Cats C and D visibility to 1 SM, and Circling Cat C visibility to 2 SM and Cat D visibility to 2 1/2 SM. For inop ALS, increase S-LOC 3 Cats C and D visibility to 1 1/2 SM. AMIRS FIX MINIMUMS: increase S-LOC 3 Cats C and D visibility to 1 SM. For inop ALS when using Raleigh/Durham altimeter setting, increase S-ILS 3 all Cats visibility to 7/8 SM and S-LOC 3 Cats C and D visibility to 2 SM. AMIRS FIX MINIMUMS: increase S-LOC 3 Cats C and D visibility to 1 1/2 SM. VDP NA when using Raleigh/Durham altimeter setting.</p>			

AWOS-3 <b>120.625</b>	RALEIGH APP CON <b>125.3 353.675</b>	UNICOM <b>123.075 (CTAF) 0</b>	GCO <b>135.075</b>
--------------------------	---	-----------------------------------	-----------------------



CATEGORY	A	B	C	D
S-ILS 3	446-1/2		200 (200-1/2)	
S-LOC 3	860-1/2	614 (700-1/2)	860-1 3/8	614 (700-1 3/8)
CIRCLING	860-1	614 (700-1)	860-1 3/4	960-2 1/4 614 (700-1 3/4) 714 (800-2 1/4)
AMIRS FIX MINIMUMS				
S-LOC 3	620-1/2	374 (400-1/2)	620-5/8	374 (400-5/8)
CIRCLING	760-1 514 (600-1)	820-1 574 (600-1)	840-1 1/2 594 (600-1 1/2)	960-2 1/4 714 (800-2 1/4)

ELEV 246	TDZE 246
FAF to MAP 5.7 NM	
Knots	60 90 120 150 180
Min:Sec	5:42 3:48 2:51 2:17 1:54

SE-2, 02 DEC 2021 to 30 DEC 2021

SE-2, 02 DEC 2021 to 30 DEC 2021