

APP CRS	Rwy Idg	<b>4156</b>
<b>082°</b>	TDZE	<b>1618</b>
	Apt Elev	<b>1635</b>

# RNAV (GPS) RWY 8

LEXINGTON (9S9)

**NA** When local altimeter setting not received, use Hermiston altimeter setting and increase all MDAs 220 feet, increase LNAV Cat C visibility ½ SM and Circling Cat A/B visibility ¼ SM. Procedure NA at night.  
DME/DME RNP-0.3 NA. Helicopter visibility reduction below 1 SM NA.

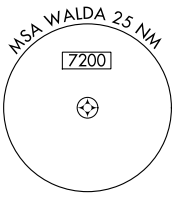
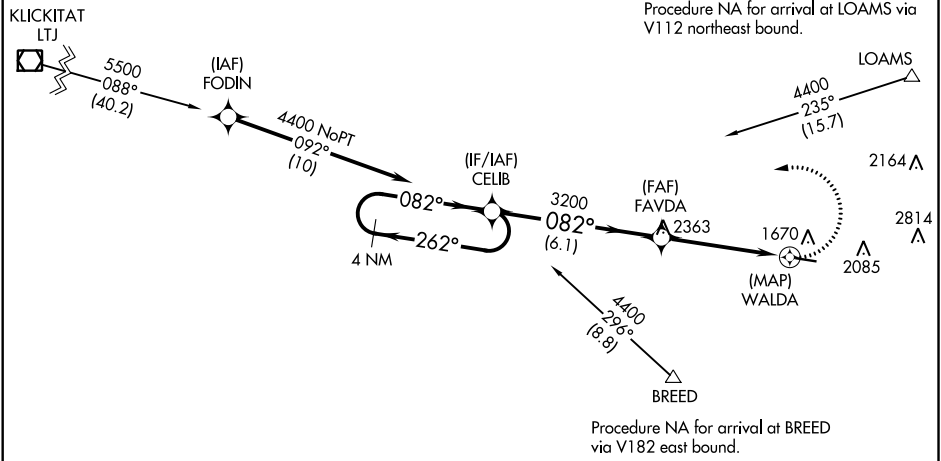
MISSED APPROACH: Climbing left turn to 4400 direct CELIB and hold.

AWOS-3  
**134.475**

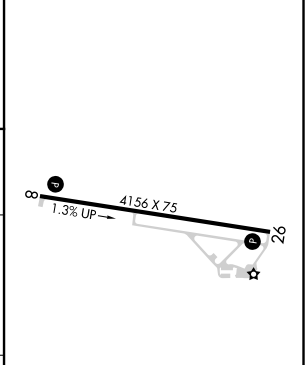
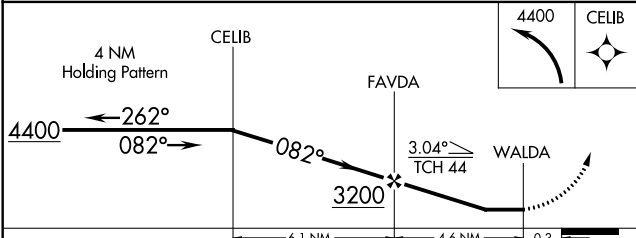
SEATTLE CENTER  
**132.6 269.35**

CTAF  
**122.9**

Procedure NA for arrival on LTJ VOR/DME airway radials 032 CW 116.



ELEV 1635	TDZE 1618
-----------	-----------



CATEGORY	A	B	C	D
LNAV MDA	2120-1	502 (500-1)	2120-1½	502 (500-1½)
CIRCLING	2380-1 745 (800-1)	2460-1¼ 825 (900-1¼)	2700-3 1065 (1100-3)	3180-3 1545 (1600-3)

MIRL Rwy 8-26

NW-1, 02 DEC 2021 to 30 DEC 2021

NW-1, 02 DEC 2021 to 30 DEC 2021