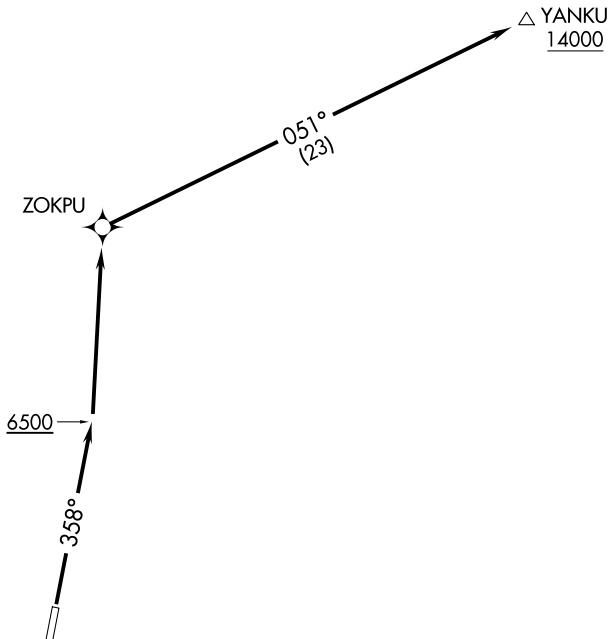


NORCAL DEP CON
119.2 279.55
SALT LAKE CENTER
132.25 338.35
CTAF
122.9
RENO RADIO
122.3



NOTE: GPS required.
NOTE: RNAV-1.

TAKEOFF MINIMUMS
Rwy 18: NA - Terrain
Rwy 36: Standard.

TAKEOFF OBSTACLE NOTES
Rwy 36: Pole 34' from DER, 338' left of centerline, 8' AGL/5942' MSL.

NOTE: Chart not to scale.

DEPARTURE ROUTE DESCRIPTION

TAKEOFF RUNWAY 36: Climb heading 358° to 6500 then direct ZOKPU, then on track 051° to YANKU. Thence . . .

. . . Maintain 14000 or assigned altitude. Expect filed altitude 10 minutes after departure.