

WAAS CH <b>42732</b> W18A	APP CRS <b>178°</b>	Rwy Idg TDZE Apt Elev	<b>7300</b> <b>5944</b> <b>5958</b>
---------------------------------	------------------------	-----------------------------	---

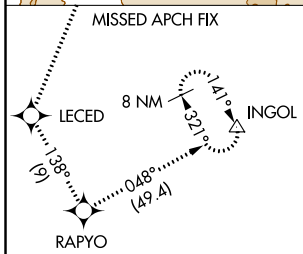
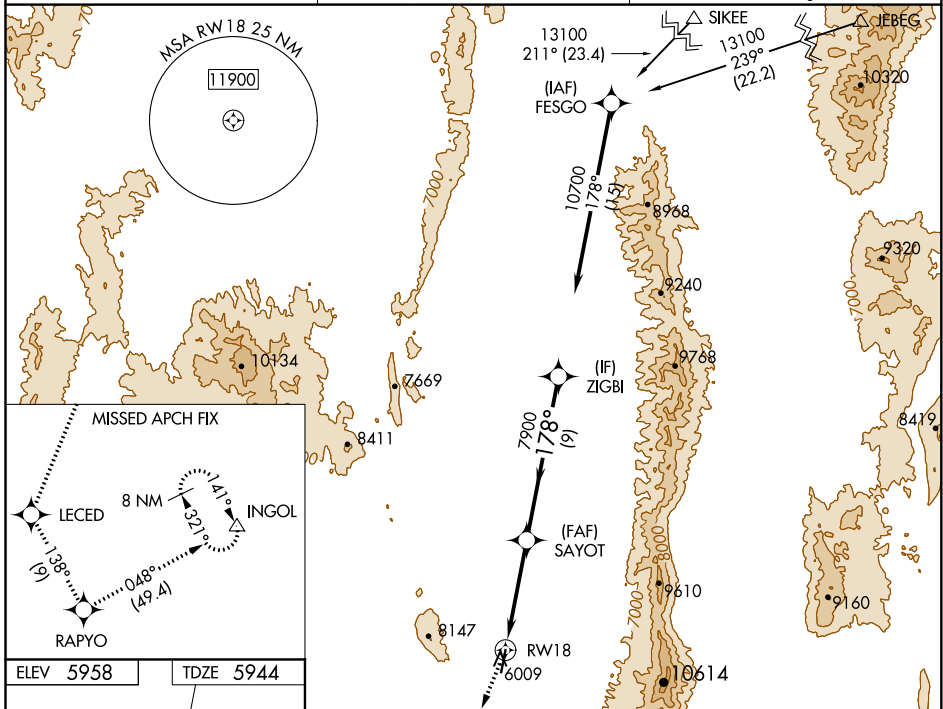
# RNAV (GPS) RWY 18

EUREKA (Ø5U)

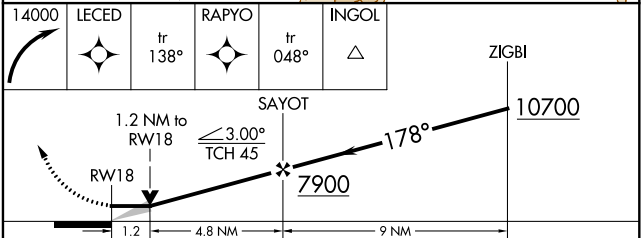
When local altimeter setting not received, procedure NA.  
 DME/DME RNP-0.3 NA. Circling NA for Cat D west of Rwy 18-36.  
 -17°C \*Missed approach requires minimum climb of 390 feet per NM to 9200.

MISSED APPROACH: Climbing right turn to 14000 direct LECED and on track 138° to RPYO and on track 048° to INGOL and hold.

AWOS-3 <b>128.325</b>	SALT LAKE CENTER <b>132.25 338.35</b>	CTAF <b>122.9</b>
--------------------------	--	----------------------



ELEV 5958	TDZE 5944
-----------	-----------



CATEGORY	A	B	C	D
LP MDA*	6360-1	416 (500-1)	6360-1½	416 (500-1½)
LP MDA	7660-1¼ 1716 (1800-1¼)	7660-1½ 1716 (1800-1½)	7660-3	1716 (1800-3)
LNAV MDA*	6380-1	436 (500-1)	6380-1¼	436 (500-1¼)
LNAV MDA	7820-1¼ 1876 (1900-1¼)	7820-1½ 1876 (1900-1½)	7820-3	1876 (1900-3)
<b>C</b> CIRCLING	7820-1¼ 1862 (1900-1¼)	7820-1½ 1862 (1900-1½)	7820-3	1862 (1900-3)

HIRL Rwy 18-36  
 REIL Rws 18 and 36

SW-4, 02 DEC 2021 to 30 DEC 2021

SW-4, 02 DEC 2021 to 30 DEC 2021