

WAAS CH <b>40242</b> <b>W07A</b>	APP CRS <b>071°</b>	Rwy ldg TDZE <b>1203</b> Apt Elev <b>1206</b>
--	------------------------	---

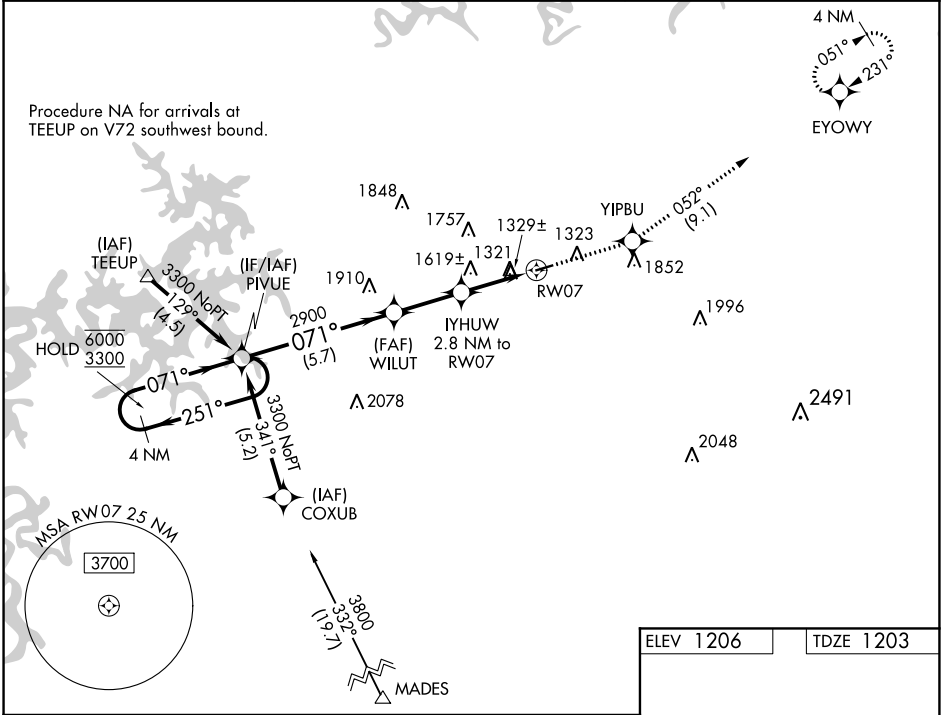
# RNAV (GPS) RWY 7

CARROLL COUNTY (4M1)

RNP APCH.  
 ▼ Circling Rwy 25 NA at night. Rwy 7 helicopter visibility reduction below 3/4 SM NA.  
 Use Branson altimeter setting; when not received, use Rogers altimeter setting and increase all MDA 20 feet.

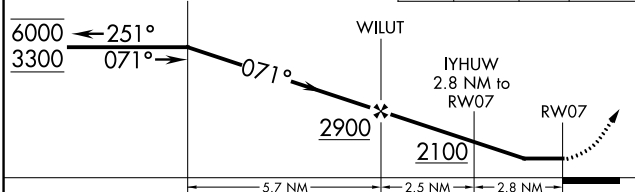
MISSED APPROACH: Climb to 3300 direct YIPBU and on track 052° to EYOWY and hold.

BBG AWOS-3 <b>124.625</b>	RAZORBACK APPROACH ★ <b>126.6 305.2</b>	CTAF <b>122.9</b>
------------------------------	--	----------------------

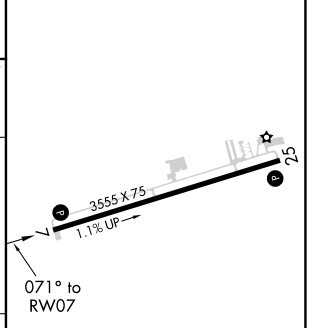


Visual Segment - Obstacles.

3300	YIPBU	tr 052°	EYOWY
------	-------	---------	-------



ELEV 1206	TDZE 1203
-----------	-----------



CATEGORY	A	B	C	D
LP MDA	1660-1	457 (500-1)		NA
LNAV MDA	1940-1	737 (800-1)		NA
<b>C</b> CIRCLING	1940-1 734 (800-1)	1980-1 774 (800-1)		NA

REIL Rwy 7 and 25  
 MIRL Rwy 7-25

SC-1, 02 DEC 2021 to 30 DEC 2021

SC-1, 02 DEC 2021 to 30 DEC 2021