

WAAS CH 82601 W31A	APP CRS 313°	Rwy Idg 4999 TDZE 18 Apt Elev 18
--	------------------------	---

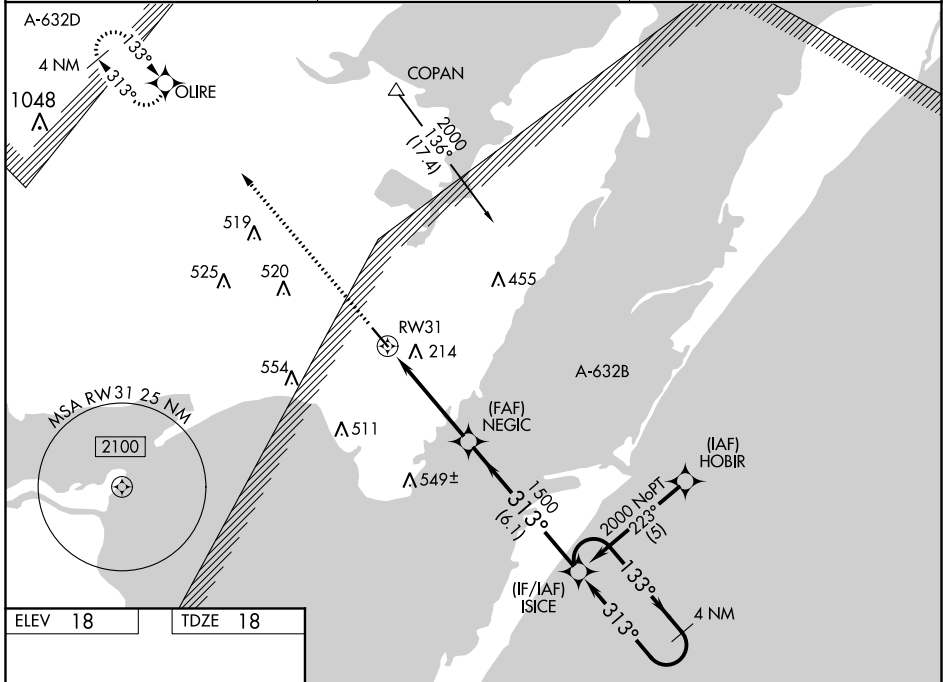
RNAV (GPS) RWY 31

MCCAMPBELL-PORTER (TFP)

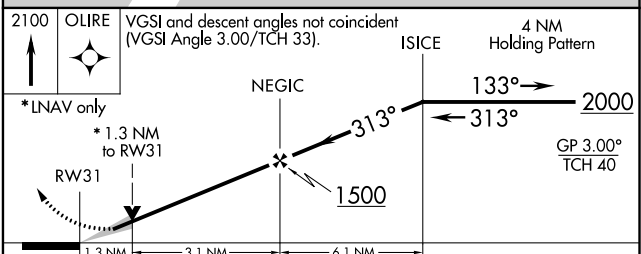
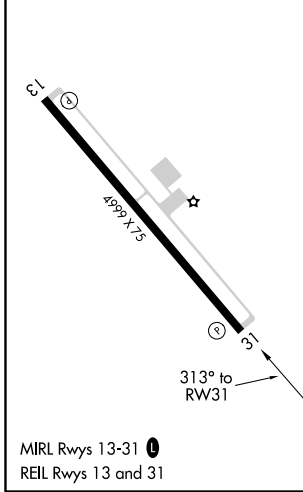
⚠ BARO-VNAV NA when using Mustang Beach altimeter setting. For uncompensated BARO-VNAV systems, LNAV/VNAV NA below -15°C (5°F) or above 48°C (118°F).
⚠ When local altimeter setting not received, use Mustang Beach altimeter setting and increase LPV DA to 291 feet; LNAV/VNAV DA to 533 feet; and all MDAs 40 feet; increase LNAV Cat C visibility ¼ mile. VDP NA when using Mustang Beach altimeter setting. DME/DME RNP-0.3 NA.

MISSED APPROACH:
Climb to 2100 direct OLIRE and hold.

AWOS-3 118.775	CORPUS APP CON 120.9 348.725	UNICOM 122.7 (CTAF) 0
--------------------------	--	---------------------------------



ELEV 18	TDZE 18
---------	---------



CATEGORY	A	B	C	D
LPV DA	268-1		250 (300-1)	
LNAV/VNAV DA	510-1¾ 492 (500-1¾)			
LNAV MDA	480-1	462 (500-1)	480-1½ 462 (500-1½)	480-1½ 462 (500-1½)
CIRCLING	520-1	502 (600-1)	520-1½ 502 (600-1½)	580-2 562 (600-2)

SC-3, 02 DEC 2021 to 30 DEC 2021

SC-3, 02 DEC 2021 to 30 DEC 2021