

APP CRS	Rwy Idg	5003
011°	TDZE	62
	Apt Elev	62

RNAV (GPS) RWY 1

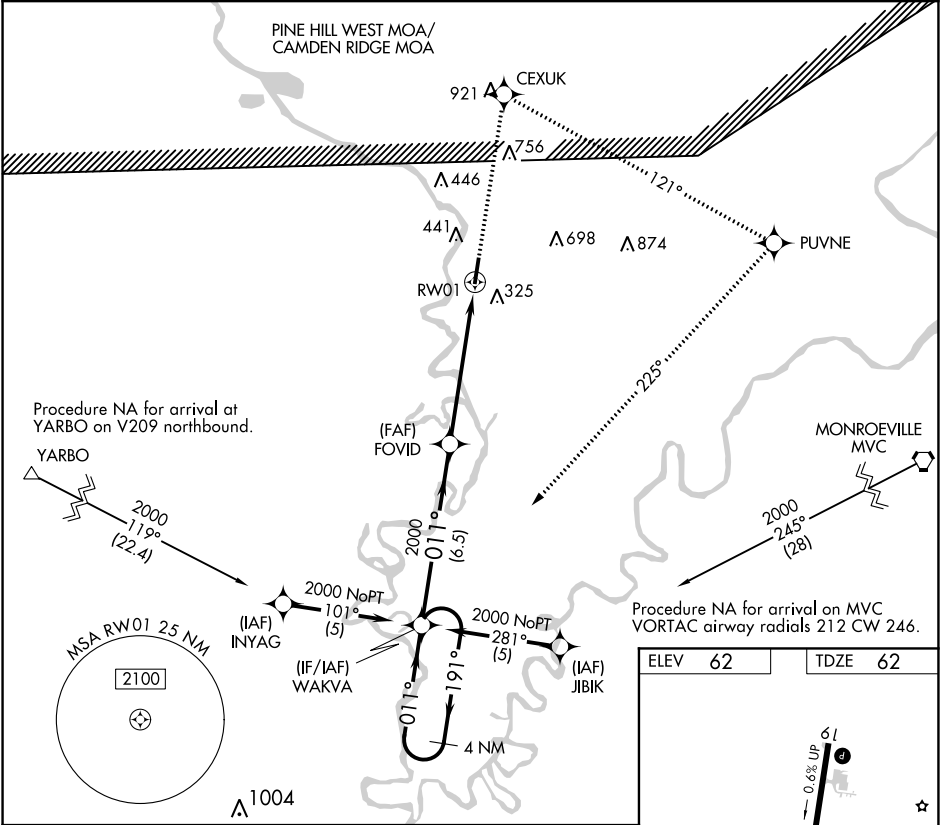
JACKSON MUNI (4R3)

RNP APCH.

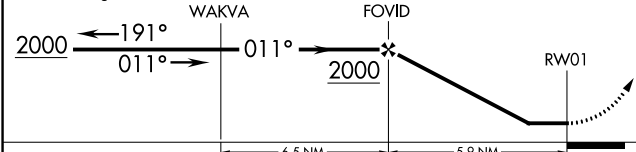
∇ Procedure NA at night. Rwy 1 helicopter visibility reduction below 1 SM NA. Use Evergreen altimeter setting, when not received, use Mobile Rgnl altimeter setting and increase all MDA 20 feet.
▲ NA

MISSED APPROACH: Climb to 2000 direct CEXUK and right turn on track 121° to PUVNE and right turn on track 225° to WAKVA and hold.

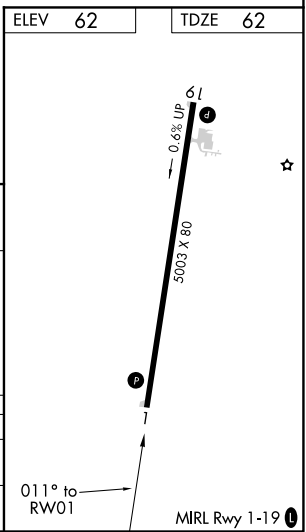
GZH ASOS	HOUSTON CENTER	CTAF
133.425	127.65 285.475	122.90



Visual Segment - Obstacles.	2000	CEXUK	PUVNE	WAKVA
4 NM Holding Pattern	↑	✧	↻ tr 121°	↻ tr 225°



CATEGORY	A	B	C	D
LNVA MDA	900-1 838 (900-1)	900-1 1/4 838 (900-1 1/4)	900-2 1/2 838 (900-2 1/2)	900-2 3/4 838 (900-2 3/4)
CIRCLING	980-1 1/4	918 (1000-1 1/4)	980-2 3/4 918 (1000-2 3/4)	1000-3 938 (1000-3)



SE-4, 02 DEC 2021 to 30 DEC 2021

SE-4, 02 DEC 2021 to 30 DEC 2021