

APP CRS	Rwy Idg	<b>5003</b>
<b>191°</b>	TDZE	<b>39</b>
	Apt Elev	<b>62</b>

# RNAV (GPS) RWY 19

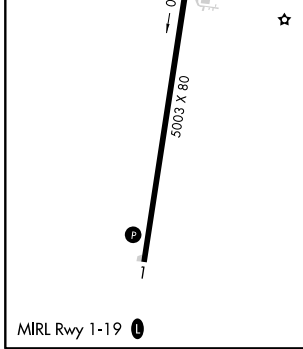
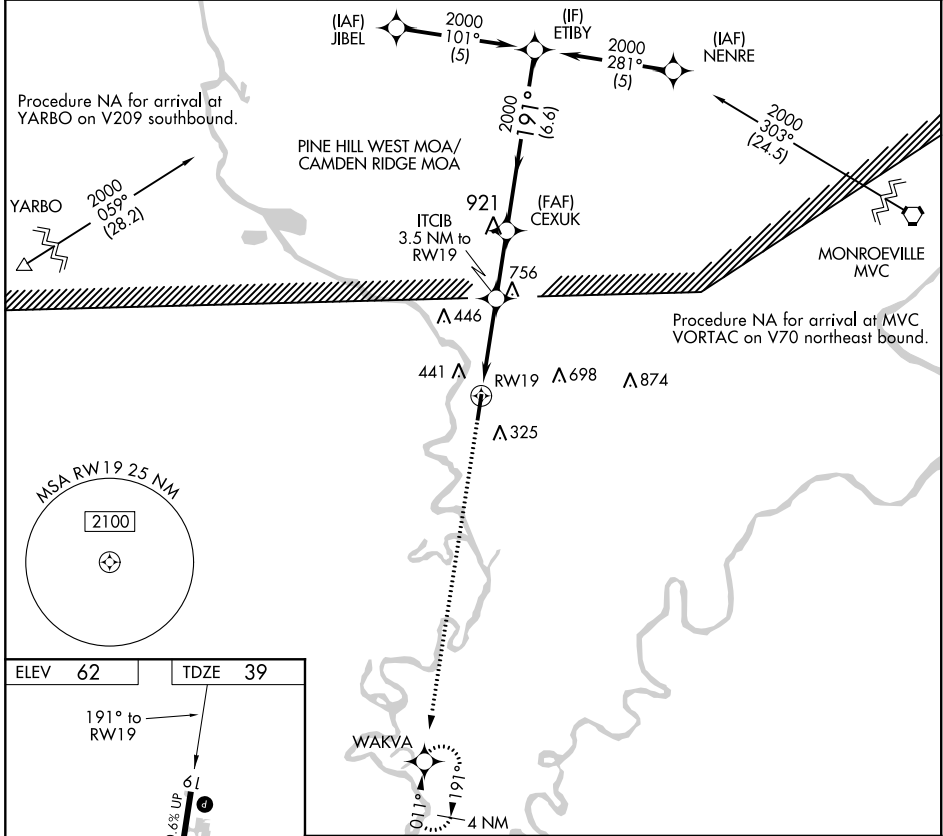
JACKSON MUNI (4R3)

**▼** DME/DME RNP-0.3 NA. Procedure NA at night. Visibility reduction by helicopters NA. Use Evergreen altimeter setting; when not received, use Mobile Rgnl altimeter setting and increase all MDA 20 feet.

**▲** NA

MISSED APPROACH: Climb to 2000 direct WAKVA and hold.

GZH ASOS <b>133.425</b>	HOUSTON CENTER <b>127.65 285.475</b>	CTAF <b>122.90</b>
----------------------------	---	-----------------------



2000	WAKVA	VGSI and descent angles not coincident (VGSI Angle 3.00/TCH 39).		ETIBY
↑	✧	CEXUK	← 191°	2000
		ITCIB 3.5 NM to RWY 19		Procedure Turn NA
		3.35° TCH 39		
		3.5 NM	2.5 NM	6.6 NM
CATEGORY	A	B	C	D
LNAV MDA	1000-1¼ 961 (1000-1¼)	1000-1½ 961 (1000-1½)	1000-3	961 (1000-3)
CIRCLING	1000-1¼ 938 (1000-1¼)	1000-1½ 938 (1000-1½)	1000-3	938 (1000-3)

SE-4, 02 DEC 2021 to 30 DEC 2021

SE-4, 02 DEC 2021 to 30 DEC 2021