

RNAV (GPS) RWY 4

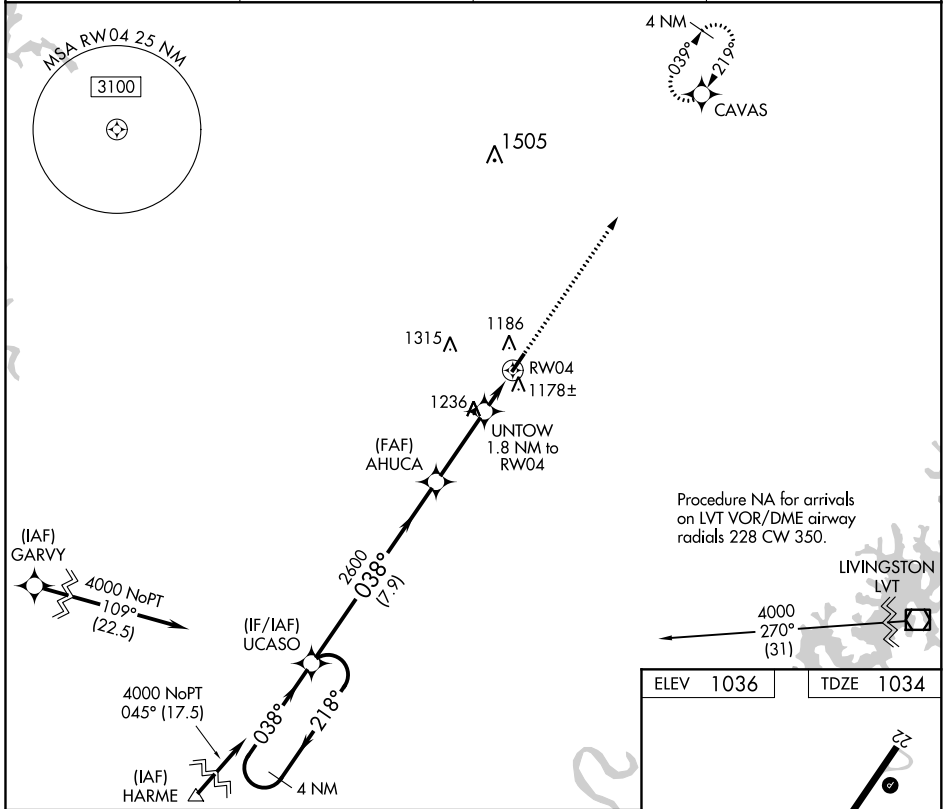
TOMPKINSVILLE-MONROE COUNTY (T'ZV)

APP CRS 038°	Rwy Idg 4000
	TDZE 1034
	Apt Elev 1036

▽ DME/DME RNP-0.3 NA.
△ NA Helicopter visibility reduction below 1 SM NA.
 Night landing: Rwy 4 NA.
 Use Glasgow altimeter setting.

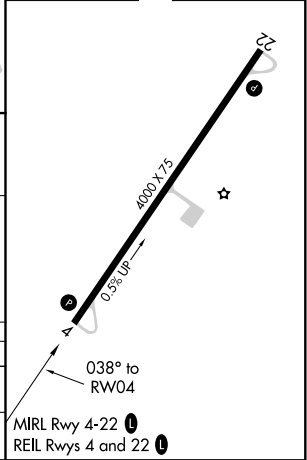
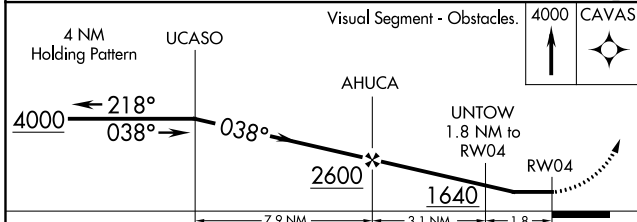
MISSED APPROACH: Climb to 4000 direct CAVAS and hold.

AWOS-AV 124.175	GLW AWOS-3 118.525	MEMPHIS CENTER 132.9 290.3	UNICOM 123.05 (CTAF) 0
---------------------------	------------------------------	--------------------------------------	----------------------------------



Procedure NA for arrivals on LVT VOR/DME airway radials 228 CW 350.

ELEV 1036	TDZE 1034
-----------	-----------



CATEGORY	A	B	C	D
LNVA MDA	1540-1	506 (600-1)	1540-1 3/8 506 (600-1 3/8)	NA
C CIRCLING	1640-1 604 (700-1)	1800-1 764 (800-1)	1840-2 1/4 804 (900-2 1/4)	NA

RNAV (GPS) RWY 4

SE-1, 02 DEC 2021 to 30 DEC 2021

SE-1, 02 DEC 2021 to 30 DEC 2021