

WAAS CH <b>60930</b> <b>W34A</b>	APP CRS <b>344°</b>	Rwy Idg TDZE <b>2437</b> Apt Elev <b>2437</b>	<b>5089</b>
--	------------------------	---	-------------

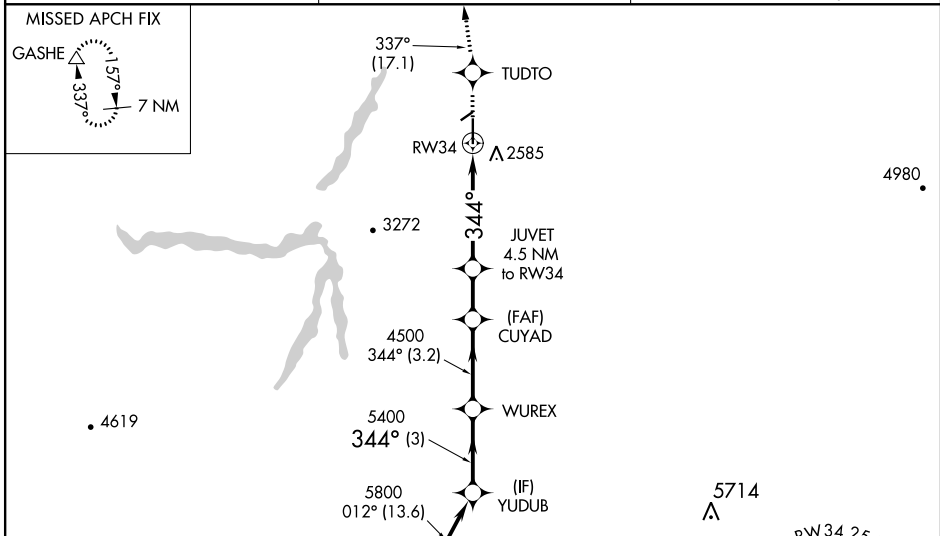
# RNAV (GPS) RWY 34

MADRAS MUNI (S33)

**NA** Baro-VNAV NA when using Redmond altimeter setting. For uncompensated Baro-VNAV systems, LNAV/VNAV NA below -19°C (-2°F) or above 54°C (130°F). DME/DME RNP-0.3 NA. When local altimeter setting not received, use Redmond altimeter setting and increase all DA and MDA 580 feet; increase LPV and LNAV/VNAV all Cats visibility 2 miles, increase LNAV and Circling Cat A visibility ¼ mile, Cat B visibility ½ mile, and Cat C visibility 1½ mile.

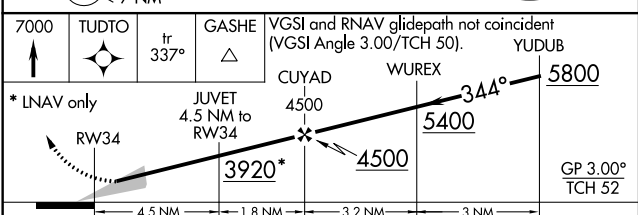
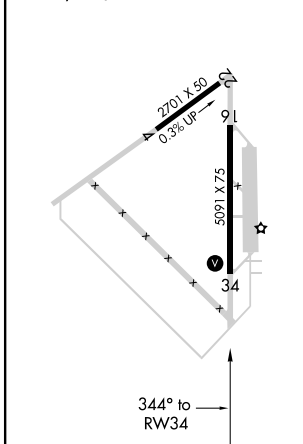
**MISSED APPROACH:** Climb to 7000 direct TUDTO and on track 337° to GASHE and hold, continue climb-in-hold to 7000.

AWOS-3PT <b>132.425</b>	SEATTLE CENTER <b>126.15 269.475</b>	UNICOM <b>122.8 (CTAF)</b>
----------------------------	---	-------------------------------



Procedure NA for arrival on DSD VORTAC  
airway radials 295 CW 092.

ELEV <b>2437</b>	TDZE <b>2437</b>
MIRL Rwy 16-34	REIL Rwy 34



CATEGORY	A	B	C	D
LPV DA	2687-1 250 (300-1)			NA
LNAV/VNAV DA	2687-1 250 (300-1)			NA
LNAV MDA	3000-1 563 (600-1)	3000-1½ 563 (600-1½)		NA
CIRCLING	3000-1 563 (600-1)	3020-1½ 583 (600-1½)		NA

NW-1, 02 DEC 2021 to 30 DEC 2021

NW-1, 02 DEC 2021 to 30 DEC 2021