

APP CRS <b>188°</b>	Rwy Idg <b>3700</b>
	TDZE <b>1762</b>
	Apt Elev <b>1774</b>

# RNAV (GPS) RWY 19

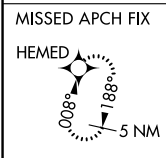
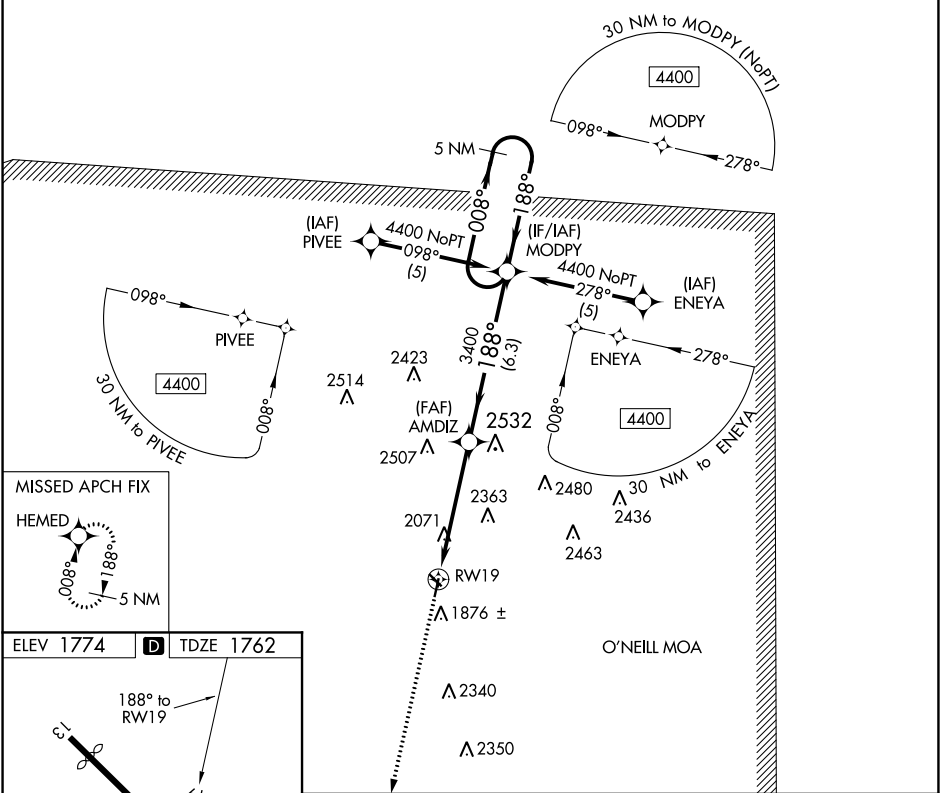
ANTELOPE COUNTY (4V9)

**▼** DME/DME RNP-0.3 NA. Visibility reduction by helicopters NA.  
**▲ NA** Use Altimeter setting, when not received, use Norfolk altimeter setting and increase all MDA 40 feet.

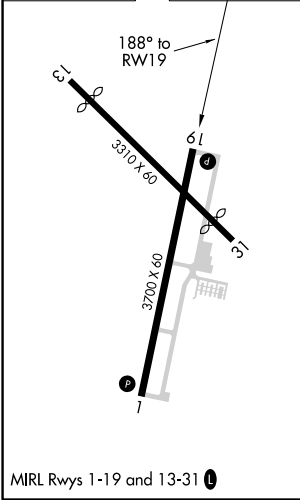
MISSED APPROACH: Climb to 4400 direct HEMED and hold.

MINNEAPOLIS CENTER  
**128.0 257.95**

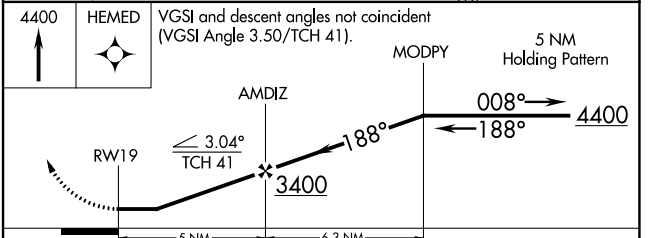
UNICOM  
**122.8 (CTAF) 0**



ELEV 1774	<b>D</b>	TDZE 1762
-----------	----------	-----------



MIRL Rwy's 1-19 and 13-31 **0**  
 NELIGH, NEBRASKA  
 Orig-A 08OCT20



CATEGORY	A	B	C	D
LNVA MDA	2380-1	618 (700-1)	NA	
<b>C</b> CIRCLING	2380-1 606 (700-1)	2440-1 666 (700-1)	NA	

42°07'N-98°02'W

# RNAV (GPS) RWY 19

ANTELOPE COUNTY (4V9)

NC-2, 02 DEC 2021 to 30 DEC 2021

NC-2, 02 DEC 2021 to 30 DEC 2021