

WAAS CH 93632	APP CRS 100°	Rwy Idg TDZE 928	4549
W10A		Apt Elev 928	

RNAV (GPS) RWY 10

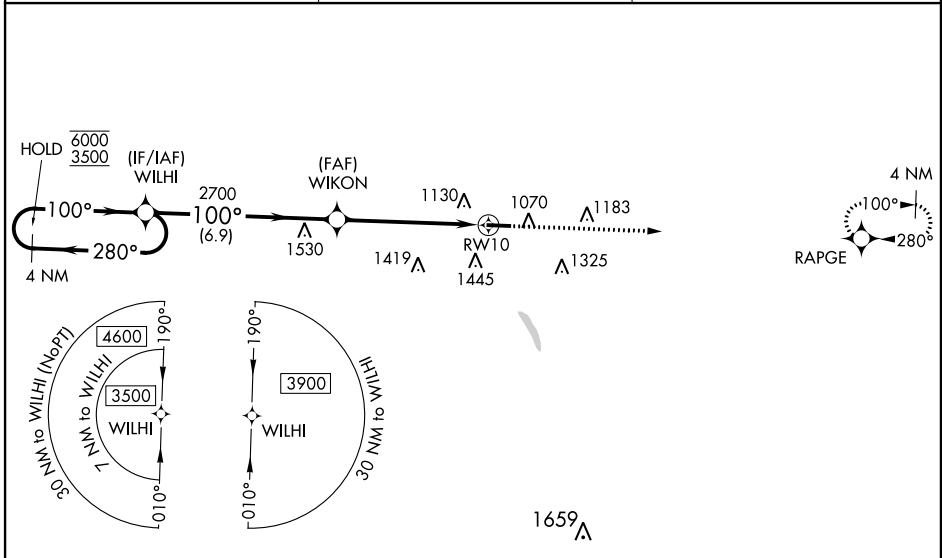
BOGGS FIELD (USW)

RNP APCH.

▼ Circling Rwy 28 NA at night. Baro-VNAV and VDP NA when using Charleston altimeter setting. Rwy 10 helicopter visibility reduction below 3/4 SM NA. For uncompensated Baro-VNAV systems, LNAV/VNAV NA below -16°C or above 54°C. When local altimeter setting not received, use Charleston altimeter setting, increase LPV DA to 1247 feet, LNAV/VNAV DA to 1730 feet, and LNAV/VNAV visibility all Cats by 1/2 SM; increase all MDAs 80 feet and LNAV visibility Cat B 1/4 SM and Cat C and D 1/2 SM, and Circling visibility Cats C and D by 1/4 SM.

▲ NA MISSED APPROACH: Climb to 3200 direct RAPGE and hold.

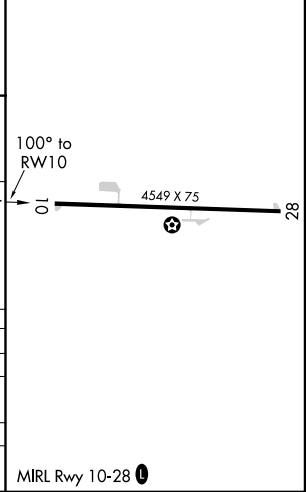
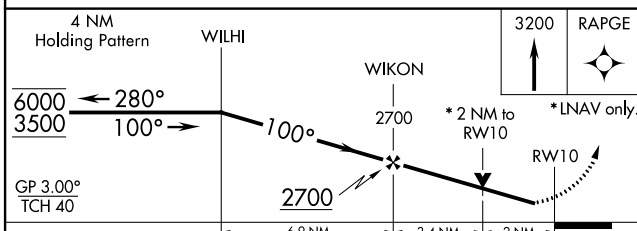
AWOS-3 118.575	CHARLESTON APP CON 124.1 269.125	UNICOM 122.725 (CTAF) 0
--------------------------	--------------------------------------------	-----------------------------------



NE-4, 02 DEC 2021 to 30 DEC 2021

NE-4, 02 DEC 2021 to 30 DEC 2021

ELEV 928	TDZE 928
----------	----------



CATEGORY	A	B	C	D
LPV DA		1178-1	250 (300-1)	
LNAV/VNAV DA		1661-2	733 (800-2)	
LNAV MDA	1620-1	692 (700-1)	1620-2	692 (700-2)
▲ CIRCLING	1620-1 692 (700-1)	1760-1¼ 832 (900-1¼)	1760-2½ 832 (900-2½)	1760-2¾ 832 (900-2¾)