

WAAS CH 62928 W28A	APP CRS 280°	Rwy Idg TDZE 928 Apt Elev 928	4549
--	------------------------	---	-------------

RNAV (GPS) RWY 28

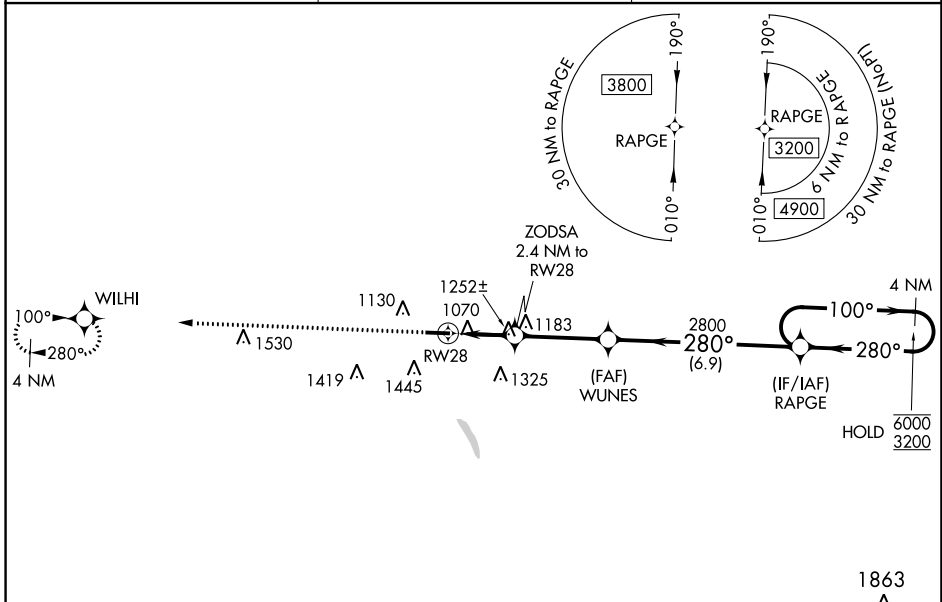
BOGGS FIELD (USW)

RNP APCH.

▼ Rwy 28 helicopter visibility reduction below 1 SM NA. Rwy 28 Straight-in and Circling minimums NA at night. When local altimeter setting not received, use Charleston altimeter setting and increase all MDA's 80 feet, LP and LNAV Cats C and D visibility 1/8 SM and Circling Cats C and D visibility 1/4 SM. *1780 when using Charleston altimeter setting.

MISSED APPROACH:
Climb to 3500 direct WILHI and hold.

AWOS-3 118.575	CHARLESTON APP CON 124.1 269.125	UNICOM 122.725 (CTAF) 0
--------------------------	--	-----------------------------------



ELEV 928	TDZE 928
----------	----------

	3500	WILHI	Visual Segment - Obstacles.		RAPGE	4 NM Holding Pattern
	1720*	ZODSA 2.4 NM to RWY 28	WUNES	2800	280°	100° → 6000 ← 280° 3200
	2.4 NM	3.4 NM	6.9 NM			
CATEGORY	A	B	C	D		
LP MDA	1520-1	592 (600-1)	1520-1 3/4	592 (600-1 3/4)		
LNAV MDA	1520-1	592 (600-1)	1520-1 3/4	592 (600-1 3/4)		
	1560-1	1760-1 1/4	1760-2 1/2	1760-2 3/4		
	632 (700-1)	832 (900-1 1/4)	832 (900-2 1/2)	832 (900-2 3/4)		

MIRL Rwy 10-28 0

NE-4, 02 DEC 2021 to 30 DEC 2021

NE-4, 02 DEC 2021 to 30 DEC 2021