

WAAS CH 65742 W10A	APP CRS 124°	Rwy Idg TDZE Apt Elev 5728 5931 5933
--	------------------------	--

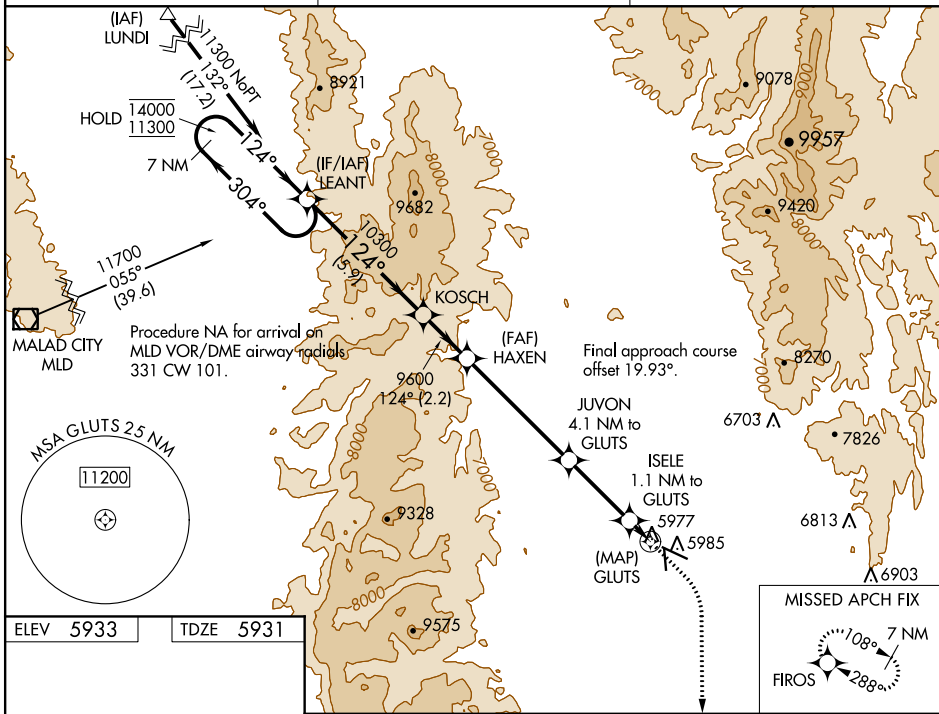
RNAV (GPS) RWY 10

BEAR LAKE COUNTY (1U7)

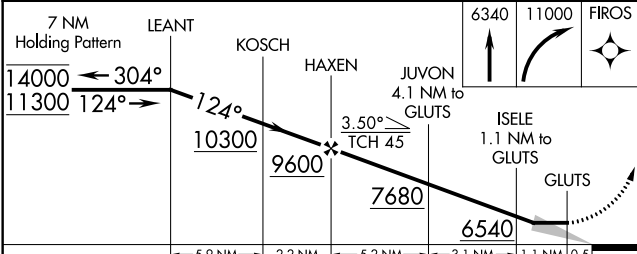
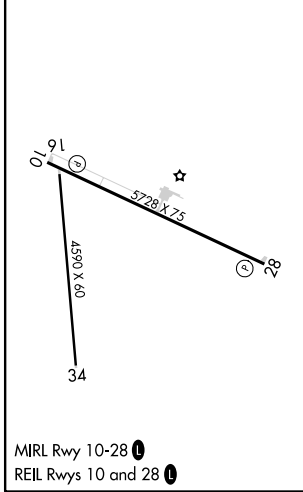
RNP APCH.
 When local altimeter setting not received, procedure NA.
 -23°C

MISSED APPROACH: (Do not exceed 185K until FIROs)
 Climb to 6340 then climbing right turn to 11000 direct FIROs and hold.

AWOS-3 118.525	SALT LAKE CENTER 128.35 239.25	UNICOM 122.8 (CTAF)
--------------------------	--	-------------------------------



ELEV 5933	TDZE 5931
-----------	-----------



CATEGORY	A	B	C	D
LP MDA	6240-1 309 (400-1)			
LNAV MDA	6260-1 329 (400-1)			
CIRCLING	6320-1 387 (400-1)	6400-1 467 (500-1)	6720-2¼ 787 (800-2¼)	7140-3 1207 (1300-3)

NW-1, 02 DEC 2021 to 30 DEC 2021

NW-1, 02 DEC 2021 to 30 DEC 2021