

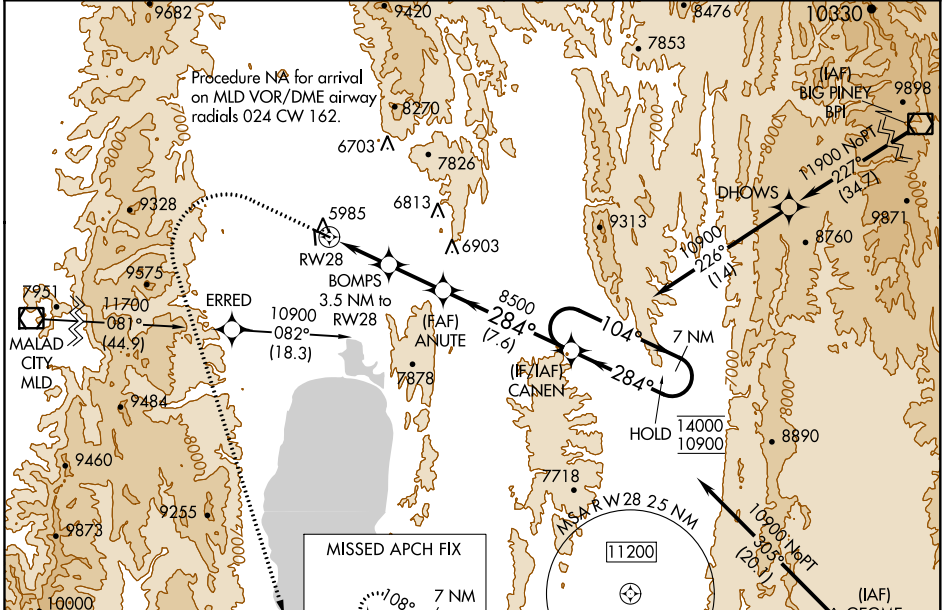
WAAS CH 62842 W28A	APP CRS 284°	Rwy Idg TDZE Apt Elev	5728 5933 5933
--	------------------------	-----------------------------	---

RNAV (GPS) RWY 28

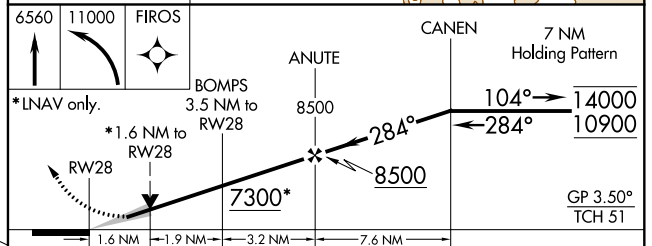
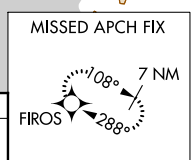
BEAR LAKE COUNTY (1U7)

RNP APCH.	MISSED APPROACH: (Do not exceed 185K until FIOS) Climb to 6560 then climbing left turn to 11000 direct FIOS and hold.
Baro-NAV NA. When local altimeter setting not received, procedure NA. -23°C	

AWOS-3 118.525	SALT LAKE CENTER 128.35 239.25	UNICOM 122.8 (CTAF) 0
--------------------------	--	---------------------------------



ELEV 5933	TDZE 5933
-----------	-----------



CATEGORY	A	B	C	D
LPV DA	6275-1		342 (400-1)	
LNAV/VNAV DA	6365-1¼		432 (500-1¼)	
LNAV MDA	6560-1 627 (700-1)		6560-1¾ 627 (700-1¾)	
CIRCLING	6560-1 627 (700-1)		6720-2¼ 787 (800-2¼) 7140-3 1207 (1300-3)	

PARIS, IDAHO
Orig-A 03DEC20

42°15'N-111°20'W

RNAV (GPS) RWY 28

BEAR LAKE COUNTY (1U7)

NW-1, 02 DEC 2021 to 30 DEC 2021

NW-1, 02 DEC 2021 to 30 DEC 2021