

APP CRS	Rwy Idg	<b>5000</b>
<b>191°</b>	TDZE	<b>54</b>
	Apt Elev	<b>65</b>

# RNAV (GPS) RWY 19

INVERNESS (INF)

RNP APCH.

**⚠** **⚠** Rwy 19 helicopter visibility reduction below 1 SM NA.

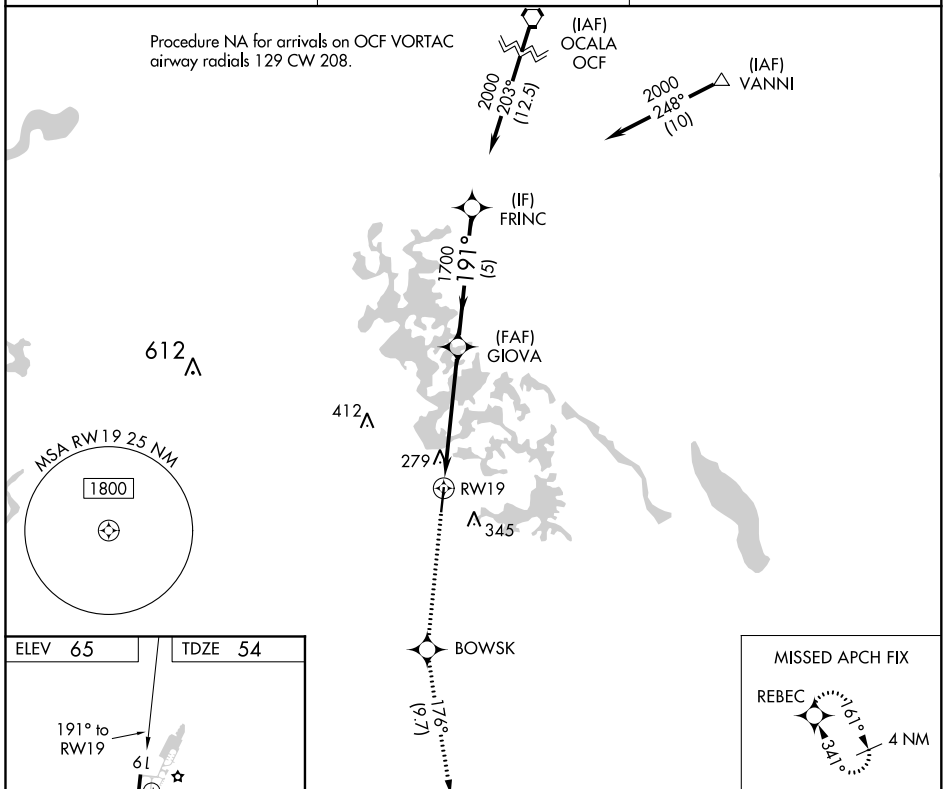
MISSED APPROACH: Climb to 2000 direct BOWSK and on track 176° to REBEC and hold.

AWOS-3  
**119.975**

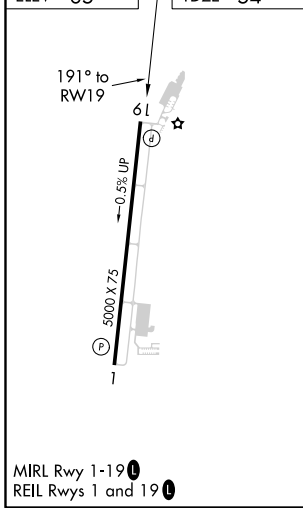
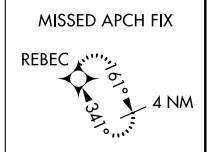
JACKSONVILLE APP CON  
**118.6 251.15**

UNICOM  
**122.725 (CTAF)** **📻**

Procedure NA for arrivals on OCF VORTAC  
airway radials 129 CW 208.



ELEV 65	TDZE 54
---------	---------



2000	BOWSK	REBEC	Visual Segment - Obstacles.		FRINC
↑	⬠	tr 176°	⬠		⬠
CATEGORY	A	B	C	D	
LNAV MDA	580-1	526 (600-1)	580-1½ 526 (600-1½)	NA	
CIRCLING	660-1	595 (600-1)	660-1½ 595 (600-1½)	NA	

SE-3, 02 DEC 2021 to 30 DEC 2021

SE-3, 02 DEC 2021 to 30 DEC 2021