

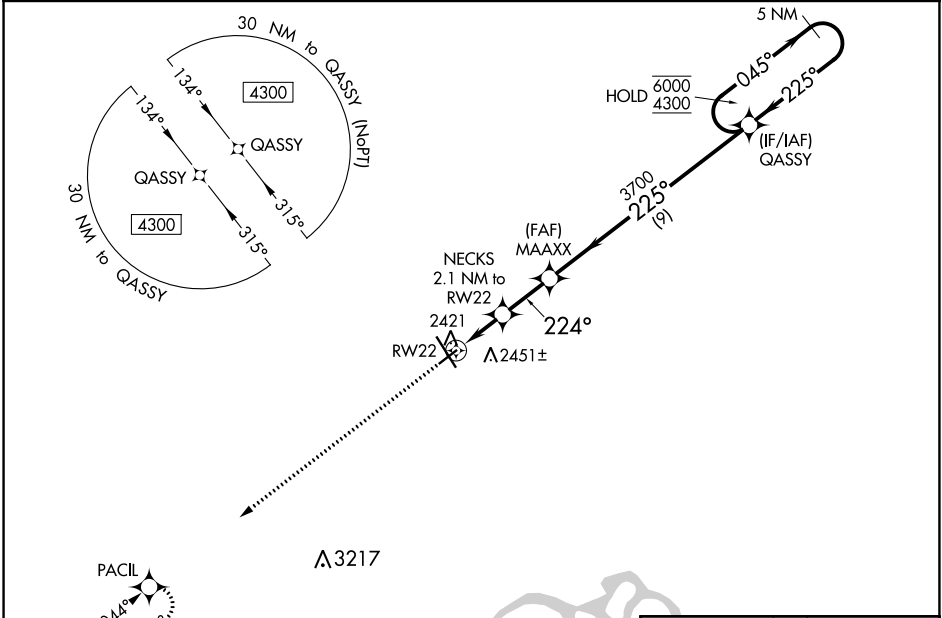
WAAS CH <b>93943</b> <b>W22A</b>	APP CRS <b>224°</b>	Rwy Idg TDZE Apt Elev	<b>4500</b> <b>2344</b> <b>2356</b>
--	------------------------	-----------------------------	---

# RNAV (GPS) RWY 22

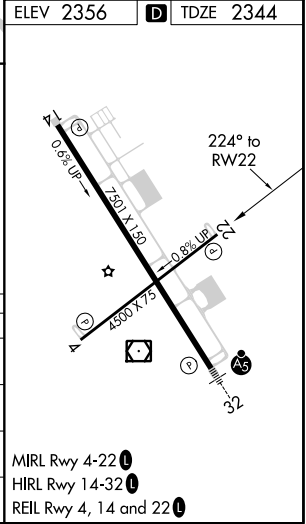
WILLISTON BASIN INTL (XWA)

RNP APCH-GPS.	MISSED APPROACH: Climb to 4300 direct PACIL and hold.
<p>For uncompensated Baro-VNAV systems, LNAV/VNAV NA below -19°C or above 54°C. -36°C</p>	

ASOS <b>125.925</b>	SALT LAKE CITY CENTER <b>126.85 305.2</b>	UNICOM <b>122.8 (CTAF)</b>
------------------------	--	-------------------------------



ELEV 2356	<b>D</b> TDZE 2344
<p>*LNAV only</p> <p>NECKS 2.1 NM to RW22</p> <p>MAAXX 3700</p> <p>QASSY 5 NM Holding Pattern</p> <p>GP 3.00° TCH 40</p>	<p>5 NM Holding Pattern</p> <p>045° → 6000</p> <p>← 225° 4300</p> <p>224°</p> <p>225°</p> <p>3700</p> <p>3020*</p> <p>1.2 NM to RW22</p> <p>0.9 NM</p> <p>2.1 NM</p> <p>9 NM</p>
CATEGORY	A B C D
LPV DA	2544-1 200 (200-1)
LNAV/VNAV DA	2594-1 250 (300-1)
LNAV MDA	2740-1 396 (400-1) 2740-1 396 (400-1 1/8)
<b>C</b> CIRCLING	2760-1 2820-1 2820-1 2920-2 404 (500-1) 464 (500-1) 464 (500-1 1/2) 564 (600-2)



NC-1, 02 DEC 2021 to 30 DEC 2021

NC-1, 02 DEC 2021 to 30 DEC 2021