

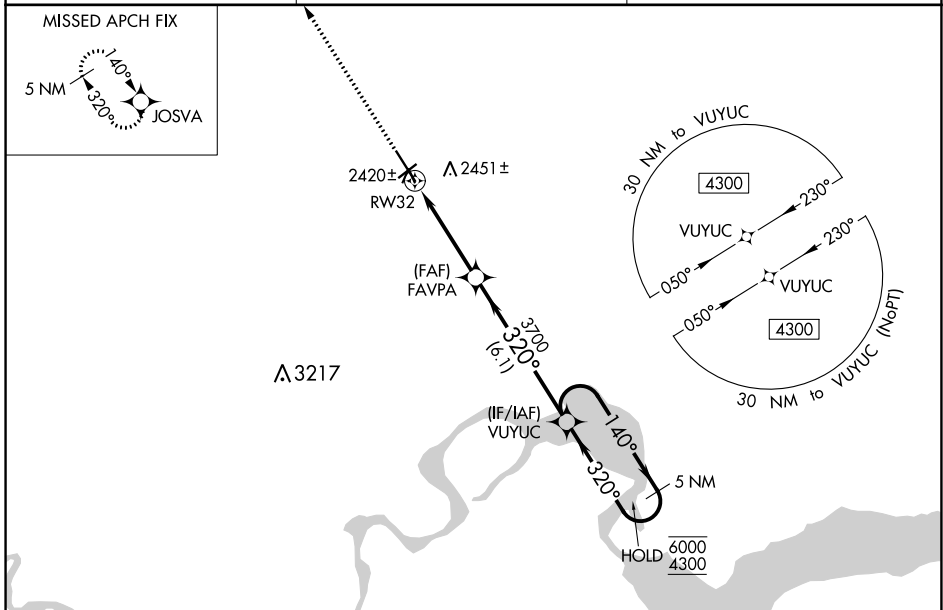
WAAS CH <b>78043</b> <b>W32A</b>	APP CRS <b>320°</b>	Rwy Idg <b>7501</b> TDZE <b>2350</b> Apt Elev <b>2353</b>
--	------------------------	---

# RNAV (GPS) RWY 32

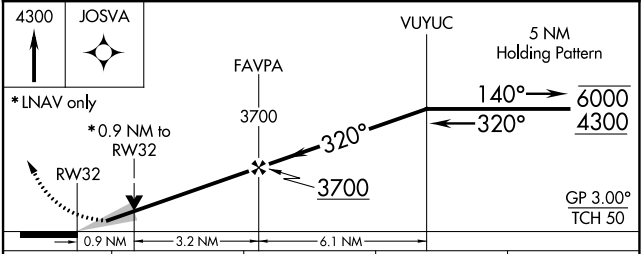
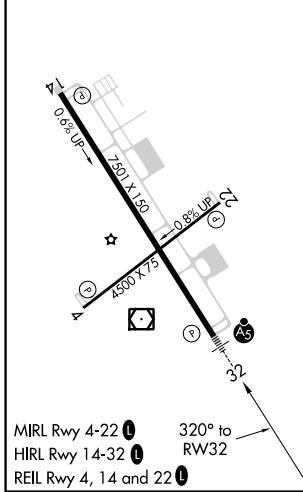
WILLISTON BASIN INTL (XWA)

RNP APCH.	MALSR	MISSED APPROACH: Climb to 4300 direct JOSVA and hold.
<p>▼ For uncompensated Baro-VNAV systems, LNAV/VNAV NA below -19°C or above 54°C. For inop ALS, increase LNAV/VNAV all Cats visibility to ¾ SM.</p> <p>⚠ -36°C</p>		

ASOS <b>125.925</b>	SALT LAKE CITY CENTER <b>126.85 305.2</b>	UNICOM <b>122.8 (CTAF) ①</b>
------------------------	--	---------------------------------



ELEV 2353	<b>D</b>	TDZE 2350
-----------	----------	-----------



CATEGORY	A	B	C	D
LPV DA		2550-½	200 (200-½)	
LNAV/VNAV DA		2600-½	250 (300-½)	
LNAV MDA		2680-½	330 (400-½)	
<b>C</b> CIRCLING	2760-1 407 (500-1)	2820-1 467 (500-1)	2820-1½ 467 (500-1½)	2920-2 567 (600-2)

NC-1, 02 DEC 2021 to 30 DEC 2021

NC-1, 02 DEC 2021 to 30 DEC 2021