

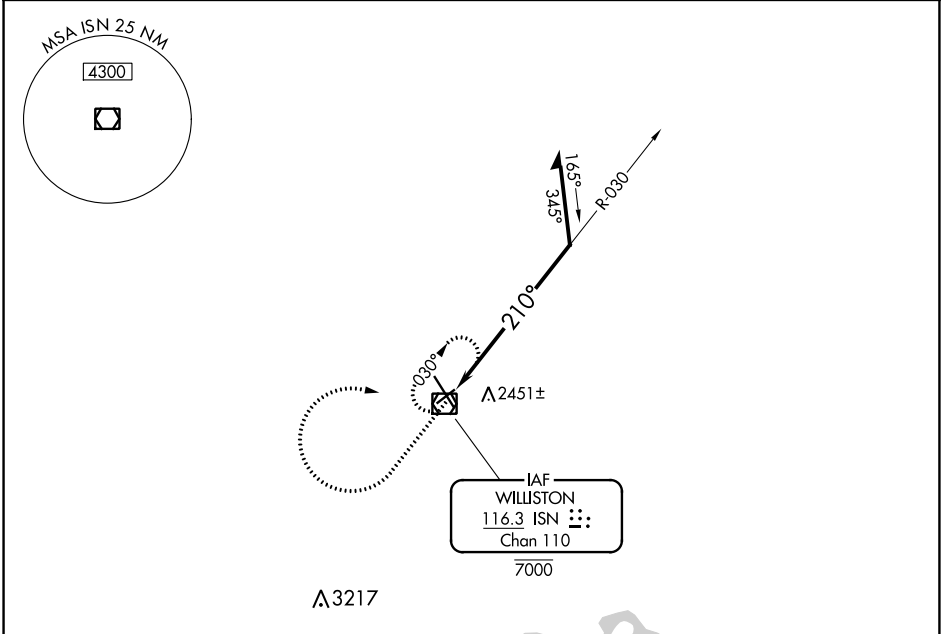
VOR/DME ISN 116.3 Chan 110	APP CRS 210°	Rwy Idg TDZE Apt Elev	4500 2344 2356
--	------------------------	-----------------------------	---

VOR RWY 22

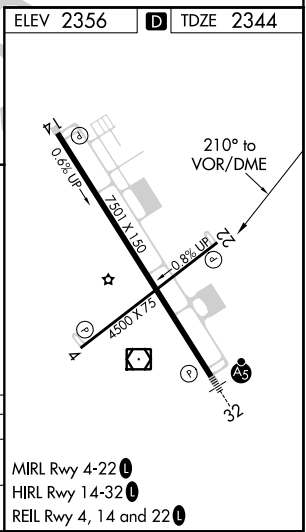
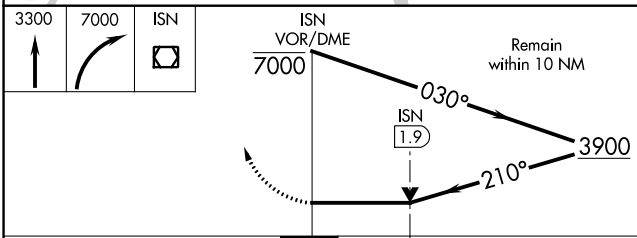
WILLISTON BASIN INTL (XWA)

MISSED APPROACH: Climb to 3300 then climbing right turn to 7000 direct ISN VOR/DME and hold, continue climb-in-hold to 7000.

ASOS 125.925	SALT LAKE CITY CENTER 126.85 305.2	UNICOM 122.8 (CTAF) 1
------------------------	--	--



ELEV 2356	D TDZE 2344
-----------	--------------------



CATEGORY	A	B	C	D
S-22	2760-1	416 (500-1)	2760-1½	416 (500-1½)
C CIRCLING	2760-1 404 (500-1)	2820-1 464 (500-1)	2820-1½ 464 (500-1½)	2920-2 564 (600-2)

NC-1, 02 DEC 2021 to 30 DEC 2021

NC-1, 02 DEC 2021 to 30 DEC 2021